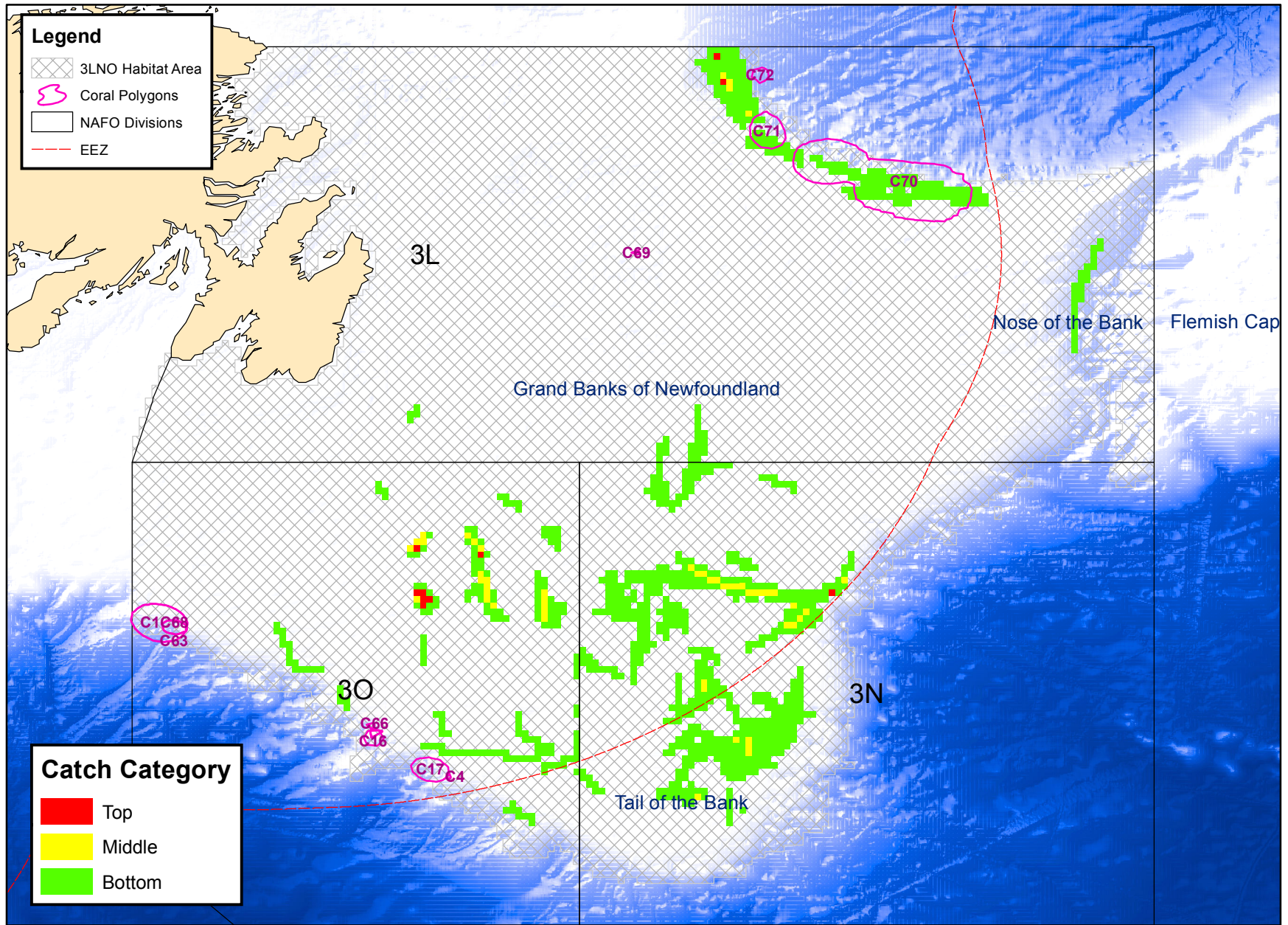


3LNO American Plaice Bycatches - 2013 to 2015



OCI 3LNO Yellowtail Flounder Catches - 2012 - 2018

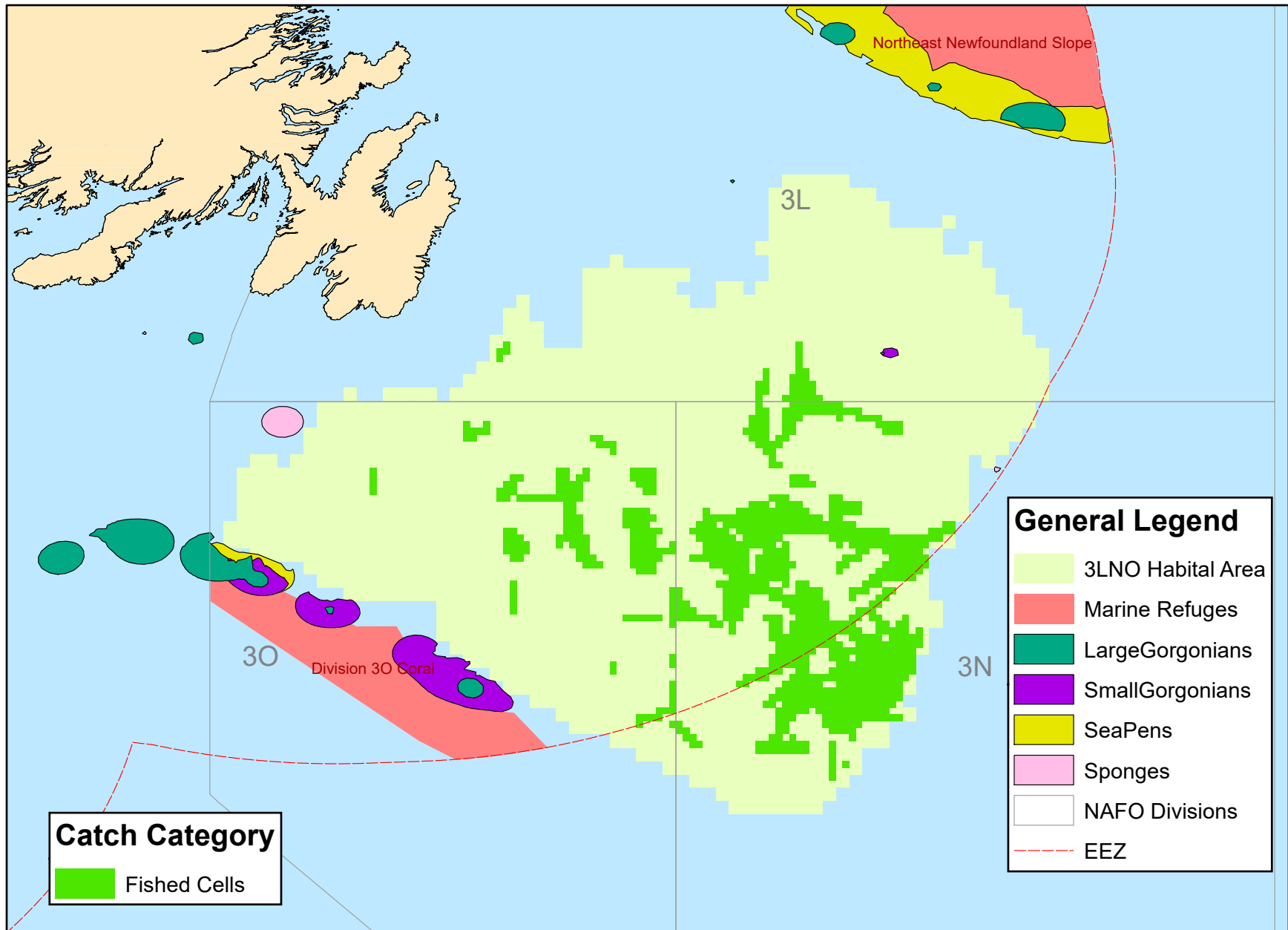


Table 11: Observer data showing catches for 2013/14 – 2017/18 from the OCI Yellowtail Flounder Fishery.

Rank	Species Name	2013/2014				2014/2015				2015/2016				2016/2017				2017/2018				2013-2018		
		Retained (t)	Discard (t)	Total catch (t)	% of total catch	Retained (t)	Discard (t)	Total catch (t)	% of total catch	Retained (t)	Discard (t)	Total catch (t)	% of total catch	Retained (t)	Discard (t)	Total catch (t)	% of total catch	Retained (t)	Discard (t)	Total catch (t)	% of total catch	Mean annual Observed total catch (t)	Catch as % of mean annual Observed total	Estimated total annual catch scaled to YTF Observer data
1	Yellowtail flounder (YTF)	4,571.74	5.33	4,577.08	86.19	1,533.12	0.29	1,533.41	86.90	2,945.71	3.33	2,949.04	89.90	1,969.96	8.51	1,978.47	80.19	3,455.12	2.24	3,457.36	92.15	2899.072	87.453	7178.6
2	American plaice	459.31	0.81	460.11	8.66	106.93	0.06	106.98	6.06	134.08	0.24	134.32	4.09	267.91	0.38	268.29	10.87	83.15	0.07	83.22	2.22	210.584	6.352	521.4
3	Thorny skate	0.00	40.79	40.79	0.77	0.06	9.50	9.56	0.54	0.55	63.80	64.34	1.96	1.13	125.68	126.81	5.14	0.02	19.06	19.08	0.51	52.116	1.572	129.0
4	Atlantic cod	93.42	0.07	93.49	1.76	39.49	0.00	39.49	2.24	33.89	0.02	33.91	1.03	34.89	0.09	34.98	1.42	22.52	0.00	22.52	0.60	44.878	1.354	111.1
5	Skate (NS)	0.05	45.65	45.70	0.86	0.00	11.46	11.46	0.65	0.02	39.38	39.40	1.20	0.00	0.84	0.84	0.03	0.00	48.38	48.38	1.29	29.156	0.880	72.2
6	Atlantic wolffish	0.02	9.79	9.81	0.18	33.70	14.09	47.79	2.71	0.15	11.18	11.33	0.35	0.00	10.34	10.34	0.42	0.00	55.17	55.17	1.47	26.888	0.811	66.6
7	Sea cucumber (NS)	0.00	4.85	4.85	0.09	0.00	0.05	0.05	0.00	0.00	13.09	13.09	0.40	0.02	20.24	20.26	0.82	0.10	27.59	27.69	0.74	13.188	0.398	32.7
8	Atlantic halibut	10.79	0.27	11.06	0.21	7.81	0.02	7.83	0.44	5.26	0.14	5.41	0.16	5.66	0.14	5.79	0.23	12.47	0.05	12.53	0.33	8.052	0.257	19.9
9	Witch flounder	19.18	0.02	19.21	0.36	1.86	0.00	1.86	0.11	12.45	0.00	12.45	0.38	6.61	0.00	6.61	0.27	0.13	0.00	0.13	0.00	8.524	0.243	21.1
10	Sculpins (Horned *Shorthorn, Longhorn, Grubby)	0.00	16.59	16.59	0.31	0.00	0.31	0.31	0.02	0.00	2.61	2.61	0.08	0.00	0.66	0.66	0.03	0.00	1.60	1.60	0.04	4.354	0.131	10.8
11	Sculpins (NS)	0.00	1.30	1.30	0.02	0.00	3.74	3.74	0.21	0.00	5.83	5.83	0.18	0.00	2.04	2.04	0.08	0.00	6.06	6.06	0.16	3.794	0.114	9.4
12	Sea raven	0.00	5.64	5.64	0.11	0.00	0.78	0.78	0.04	0.00	2.53	2.53	0.08	0.00	0.67	0.67	0.03	0.00	4.99	4.99	0.13	2.922	0.088	7.2
13	Sand lances (NS)	0.00	1.26	1.26	0.02	0.00	0.27	0.27	0.02	0.00	2.35	2.35	0.07	0.00	1.50	1.50	0.06	0.00	8.04	8.04	0.21	2.684	0.081	6.6
14	Toad crab (NS)	0.00	8.87	8.87	0.17	0.00	0.01	0.01	0.00	0.00	0.45	0.45	0.01	0.00	1.49	1.49	0.06	0.00	0.95	0.95	0.03	2.354	0.071	5.8
15	Haddock	6.36	0.01	6.37	0.12	0.24	0.00	0.24	0.01	0.18	0.00	0.18	0.01	0.01	0.00	0.01	0.00	0.08	0.00	0.08	0.00	1.376	0.042	3.4
16	Greenland halibut	4.29	0.01	4.31	0.08	0.00	0.00	0.00	0.00	0.00	0.00	0.00	0.00	0.68	0.00	0.68	0.03	0.00	0.00	0.00	0.00	0.998	0.030	2.5
17	Round skate	0.00	0.00	0.00	0.00	0.00	0.00	0.00	0.00	0.00	0.00	0.00	0.00	0.00	4.80	4.80	0.19	0.00	0.00	0.00	0.00	0.960	0.029	2.4
18	Starfish (NS)	0.00	0.73	0.73	0.01	0.00	0.00	0.00	0.00	0.00	0.70	0.70	0.02	0.00	0.20	0.20	0.01	0.00	0.92	0.92	0.02	0.510	0.015	1.3
19	Porbeagle shark	0.00	0.18	0.18	0.00	0.00	0.00	0.00	0.00	0.00	1.03	1.03	0.03	0.00	0.03	0.03	0.00	0.00	0.99	0.99	0.03	0.446	0.013	1.1
20	Lancetfishes (NS)	0.00	0.00	0.00	0.00	0.00	0.00	0.00	0.00	0.00	0.00	0.00	0.00	0.00	1.42	1.42	0.06	0.00	0.00	0.00	0.00	0.284	0.009	0.7
21	Invertebrate (NS)	0.00	1.23	1.23	0.02	0.00	0.00	0.00	0.00	0.00	0.14	0.14	0.00	0.00	0.00	0.00	0.00	0.00	0.00	0.00	0.00	0.274	0.008	0.7
22	Smooth skate	0.00	0.00	0.00	0.00	0.00	0.00	0.00	0.00	0.00	0.02	0.02	0.00	0.00	0.00	0.00	0.00	0.00	1.20	1.20	0.03	0.244	0.007	0.6
23	Capelin	0.00	0.59	0.59	0.01	0.00	0.00	0.00	0.00	0.00	0.00	0.00	0.00	0.00	0.44	0.44	0.02	0.00	0.02	0.02	0.00	0.210	0.006	0.5
29	Whale (NS)	0.00	0.30	0.30	0.01	0.00	0.00	0.00	0.00	0.00	0.00	0.00	0.00	0.00	0.00	0.00	0.00	0.00	0.00	0.00	0.00	0.060	0.002	0.1
30	Harp seal	0.00	0.03	0.03	0.00	0.00	0.07	0.07	0.00	0.00	0.03	0.03	0.00	0.00	0.00	0.00	0.00	0.00	0.15	0.15	0.00	0.056	0.002	0.1
32	Northern wolffish	0.00	0.00	0.00	0.00	0.00	0.00	0.00	0.00	0.00	0.25	0.25	0.01	0.00	0.00	0.00	0.00	0.00	0.00	0.00	0.00	0.050	0.002	0.1
35	Toothed whale (NS)	0.00	0.19	0.19	0.00	0.00	0.00	0.00	0.00	0.00	0.00	0.00	0.00	0.00	0.00	0.00	0.00	0.00	0.00	0.00	0.00	0.038	0.001	0.1
42	True seals (NS)	0.00	0.05	0.05	0.00	0.00	0.00	0.00	0.00	0.00	0.01	0.01	0.00	0.00	0.00	0.00	0.00	0.00	0.00	0.00	0.00	0.012	0.000	0.0
49	Grey seal	0.00	0.02	0.02	0.00	0.00	0.00	0.00	0.00	0.00	0.00	0.00	0.00	0.00	0.00	0.00	0.00	0.00	0.00	0.00	0.00	0.004	0.000	0.0
52	Spotted wolffish	0.00	0.01	0.01	0.00	0.00	0.00	0.00	0.00	0.00	0.00	0.00	0.00	0.00	0.00	0.00	0.00	0.00	0.00	0.00	0.00	0.002	0.000	0.0
32 other species / groups <200 kg annual (0.007%)		0.07	0.88	0.95	0.00	0.02	0.66	0.68	0.03	0.18	0.95	1.13	0.02	0.00	0.99	0.99	0.03	0.00	0.84	0.84	0.02	0.911	0.027	2.3
Grand Total (ASO data)		5,165.23	145.45	5,310.68	100.00	1,723.21	41.33	1,764.53	100.00	3,132.46	148.08	3,280.54	100.00	2,286.87	180.45	2,467.32	100.00	3,573.59	178.30	3,751.90	100.00	3315.01	100.000	8208.5
Total catch YTF (logbook, t)		7,685.804				6,273.32				7,417.007				6,730.308				7,786.392				7178.566		N/A
Observer coverage (% of YTF catch – calculated)		59.6%				24.4%				39.8%				29.4%				44.4%				40.4%		N/A
Observer coverage (% of trips – client data)		50%				25%				46%				63%				57%				48%		N/A

Key: Target (Principle 1) species; Main Primary species; Minor Primary species; Main secondary species; Minor secondary species; ETP species. 'Whale' = a decomposed carcass, so not scored.