

Masukan Industri terhadap
Strategi Pemanenan Kakap-Kerapu WPP 713

M Mukhlis Kamal

Asosiasi Demersal Indonesia

Asosiasi Demersal Indonesia (2019)



PT Kelola Mina Lout



PT Kemilau Bintang Timur



PT Inti Lautan Fajar Abadi



PT Alam Jaya Seafood



ARTA MINA TAMA Fisheries



PT Intimas Surya



PT Cilacap Samudera Fishing Industry PT Bahari Biru Nusantara



PT Bahari Biru Nusantara



PT Varia Nioga Nusantara



PT. PERMATA MARINDO JAYA Quality Seafood Supply



PT Sinar Graha



PT Sukses Hasil Alam Nusalindo



PT Trans Anugrah Mullia



PT Prima Bahari Inti Lestari



PT Inti Luhur Fuja Abadi

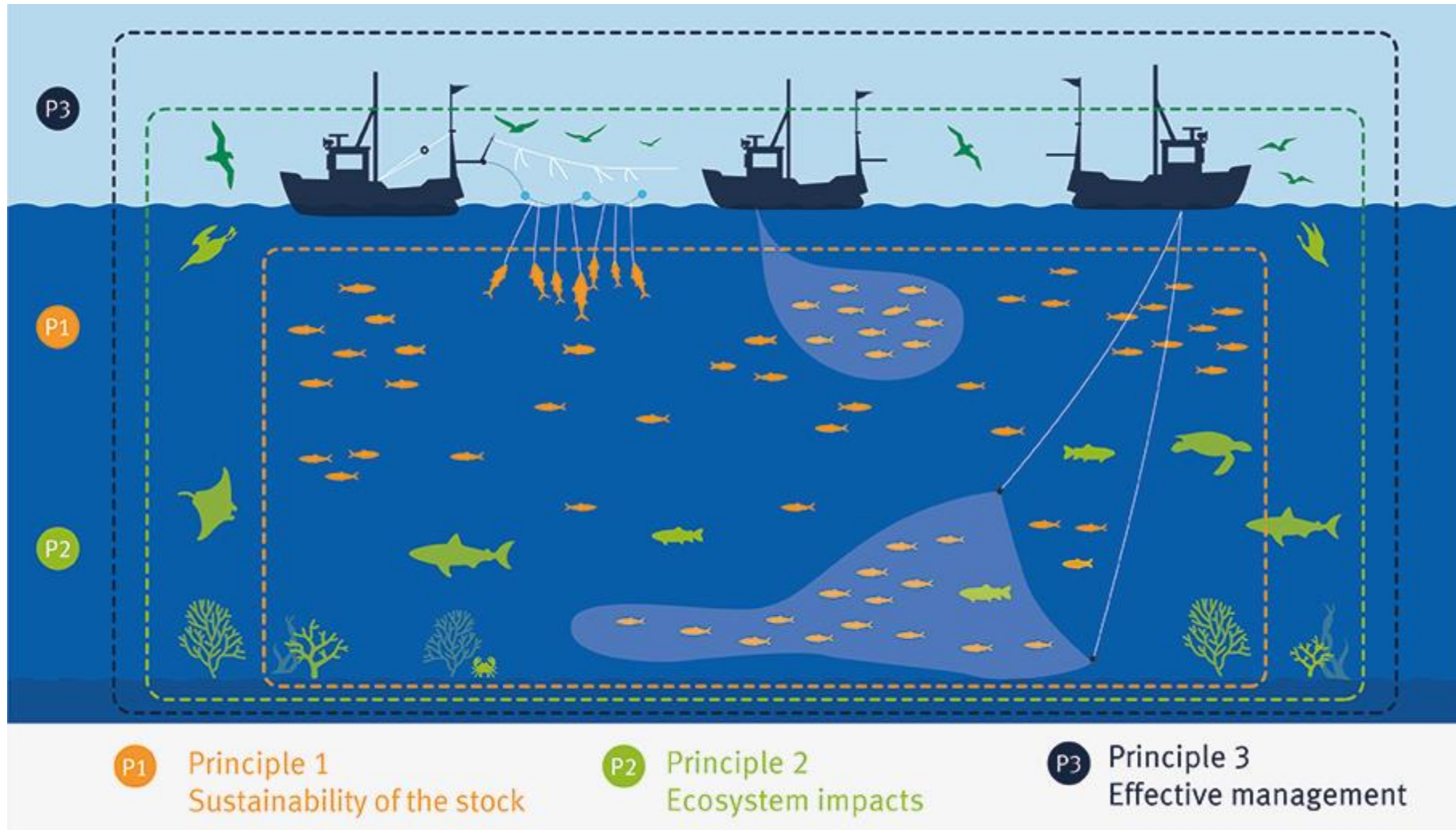


PT Sinar Graha



PT Kencana Bintang Terang

Prinsip pengelolaan perikanan berkelanjutan



(P1) Keberlanjutan stok ikan – (P2) Dampak-dampak lingkungan – (P3) Pengelolaan yang efektif

Hasil penilaian terhadap kinerja ADI

FIP Progress

FIP at a Glance

ENVIRONMENTAL i Addressing 28 of 28 indicators

Current Status:

32%

14%

54%

Starting Evaluation: June 01, 2020

32%

14%


54%

Progress Rating i

A

ADVANCED
PROGRESS

Actions Complete i



94%

● Complete ● Incomplete

Next Update Due i

AUG 2022

Target End Date

JUN 2025

SOCIAL i Assessing - of 24 indicators

Risk Assessment i : Not Required

Last Assessment i : -

Workplan Components i :

NOT APPLICABLE

1 - Sustainable fish stocks

Indicator	Year 0	Year 1	Year 2	Year 3	Year 4	Year 5
Stock status outcome (1.1.1)						
Stock rebuilding outcome (1.1.2)						
Harvest strategy (1.2.1)						
Harvest control rules & tools (1.2.2)						
Harvest strategy information & monitoring (1.2.3)						
Assessment of stock status (1.2.4)						

2 - Minimizing environmental impact

Indicator	Year 0	Year 1	Year 2	Year 3	Year 4	Year 5
Primary species outcome (2.1.1)						
Primary species management (2.1.2)						
Primary species information (2.1.3)						
Secondary species outcome (2.2.1)						
Secondary species management (2.2.2)						
Secondary species information (2.2.3)						
ETP species outcome (2.3.1)						
ETP species management (2.3.2)						
ETP species information (2.3.3)						
Habitat outcome (2.4.1)						
Habitat management (2.4.2)						
Habitat information (2.4.3)						
Ecosystem outcome (2.5.1)						
Ecosystem management (2.5.2)						
Ecosystem information (2.5.3)						

3 - Effective management

Indicator	Year 0	Year 1	Year 2
Legal/customary framework (3.1.1)			
Consultation, roles & responsibilities (3.1.2)			
Governance/policy long-term objectives (3.1.3)			
Fishery-specific objectives (3.2.1)			
Decision-making processes (3.2.2)			
Compliance & enforcement (3.2.3)			
Monitoring & management performance evaluation (3.2.4)			

Jenis kakap-kerapu yang terdaftar dalam FIP ADI (712-713-718)



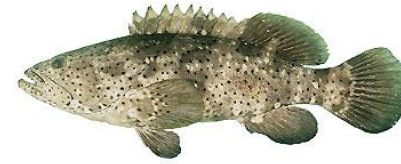
Malabar Blood Snapper
Lutjanus malabaricus



Goldband Snapper
Pristipomoides multidens



Orange-Spotted Grouper
Epinephelus coioides



Malabar Grouper
Epinephelus malabaricus



Duskytail Grouper
Epinephelus bleekeri



Crimson Snapper
Lutjanus erythropterus



Sharptooth Jobfish
Pristipomoides typus



Coral Grouper
Epinephelus corallicola



Greasy Grouper
Epinephelus tauvina



Bar-Cheeked Coral Trout
Plectropomus maculatus



Emperor Snapper
Lutjanus sebae



Pinjalo Snapper
Pinjalo pinjalo



Whitespotted Grouper
Epinephelus coeruleopunctatus



Tomato Hind
Cephalopholis sonnerati

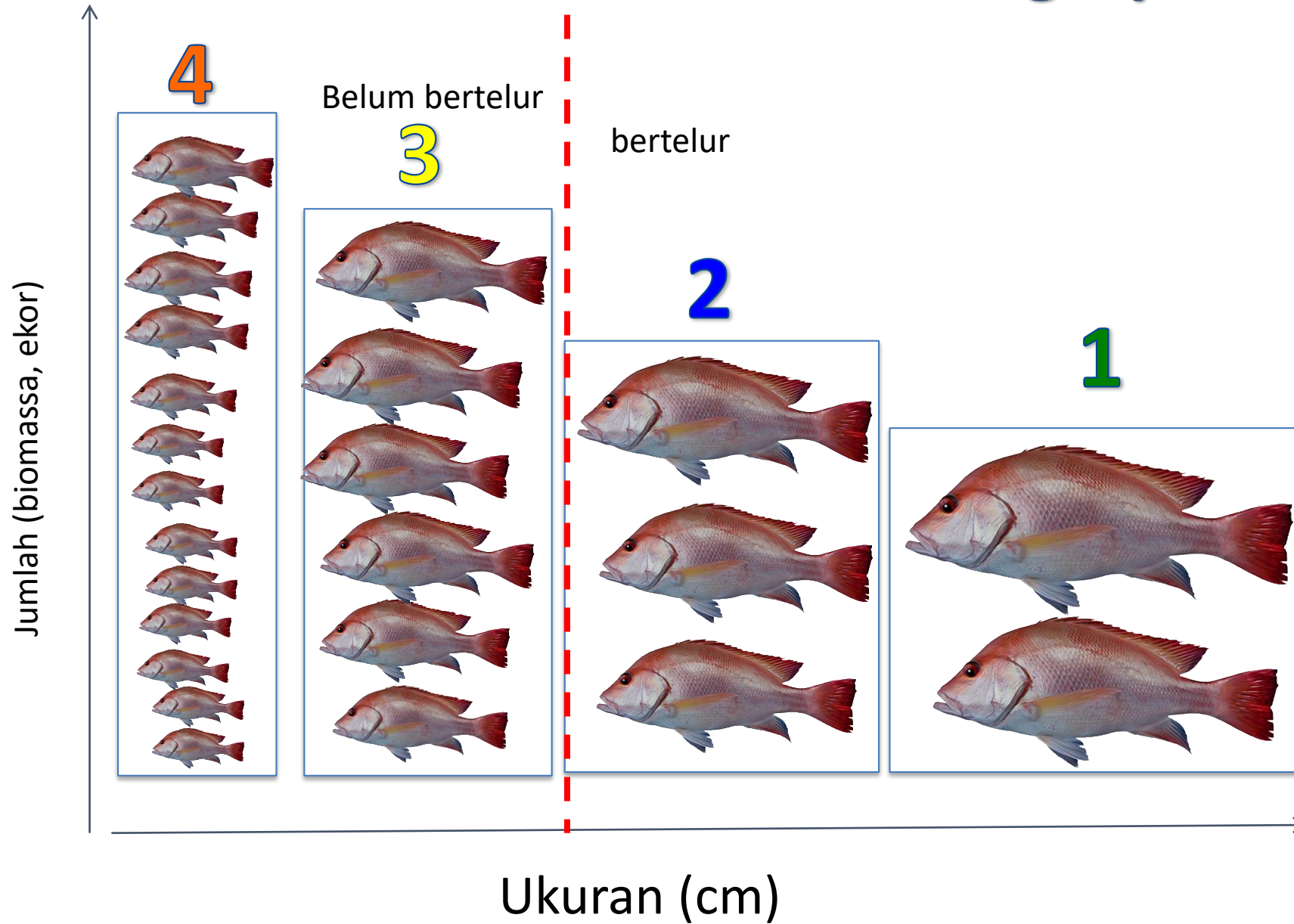


Humpback Grouper
Cromileptes altivelis



Leopard Grouper
Plectropomus leopardus

Variasi ukuran ikan hasil tangkapan

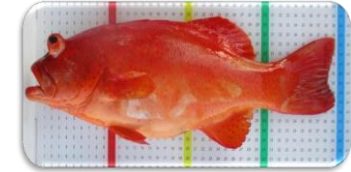
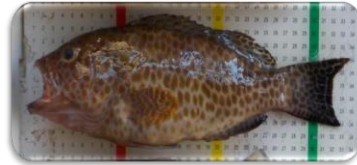


Spawning Potential Ratio Kakap di WPPNRI 713



No.	Spesies	Nilai SPR (%)				
		2016	2017	2018	2019	2020
1	Bambangan/kakap merah, <i>malabar red snapper</i> , (<i>Lutjanus malabaricus</i>)	39 (33-45)	36 (31-41)	20 (18-22)	35 (33-36)	36 (35-37)
2	Kakap anggoli, <i>goldbanded jobfish</i> (<i>Pristipomoides multidentatus</i>)	44 (42-46)	46 (43-50)	30 (28-31)	43 (37-45)	61 (57-64)
3	Kurisi perak, <i>rusty jobfish</i> , (<i>Aphareus rutilans</i>)	NA	19 (5-33)	31 (28-34)	44 (36-52)	56 (53-60)

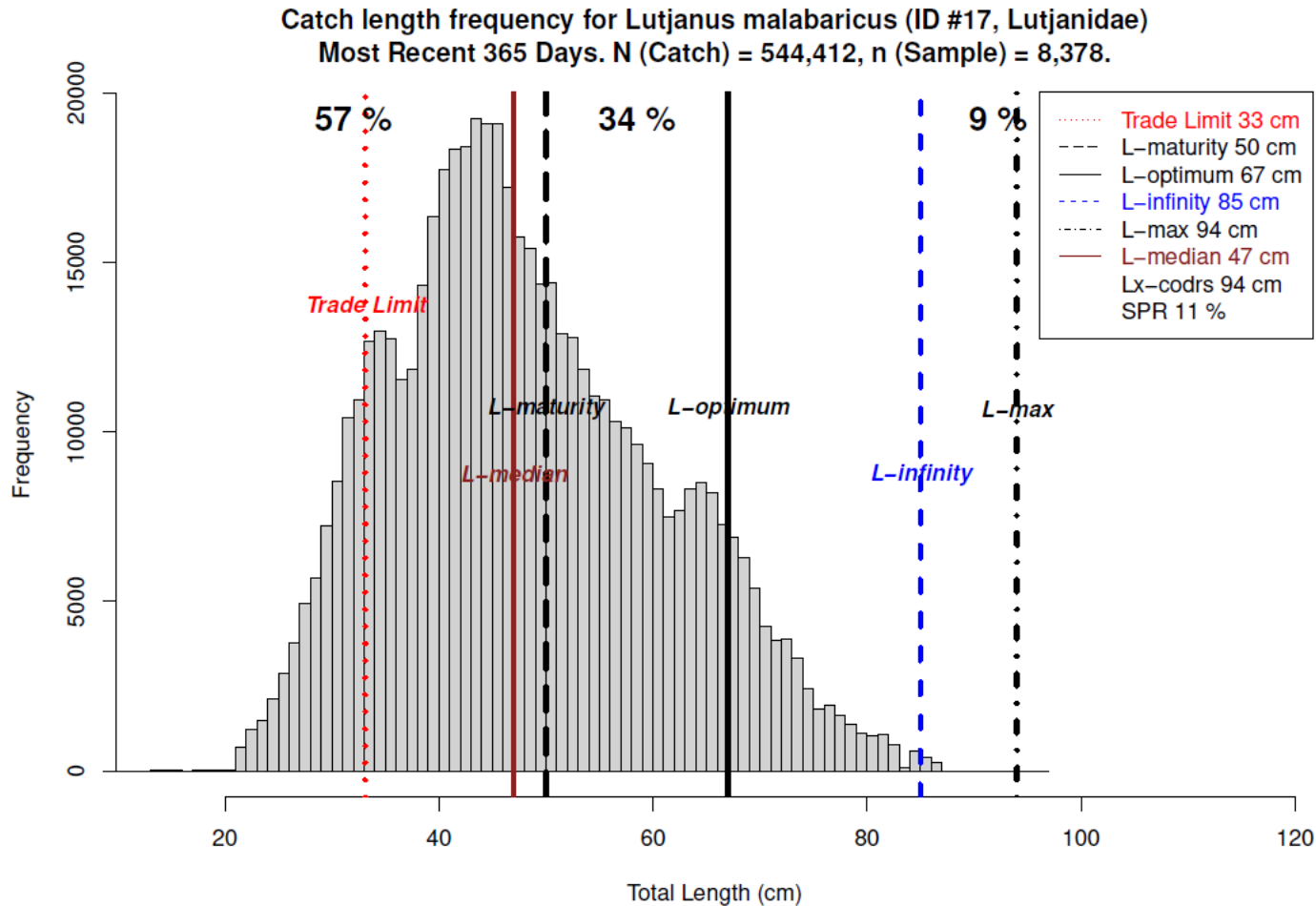
Spawning Potential Ratio Kerapu di WPPNRI 713



No.	Spesies	Nilai SPR (%)				
		2016	2017	2018	2019	2020
1	Kerapu Lumpur, <i>orange spotted grouper</i> , (<i>Epinephelus coioides</i>)	NA	47 (32-61)	58 (51-65)	39 (34-44)	27 (25-29)
2	Kerapu Ekor Putih, <i>spotted grouper</i> ; (<i>Epinephelus areolatus</i>)	19 (18-20)	18 (17-18)	11 (10-11)	12 (12-12)	17 (16-17)
3	Kerapu Ekor Gunting, <i>white-edged lyretail</i> , (<i>Variola albimarginata</i>)	20 (17-22)	35 (30-40)	29 (24-33)	30 (24-37)	44 (39-49)
4	Kerapu Sunu, <i>leopard coral grouper</i> (<i>Plectropomus leopardus</i>)	10 (8-11)	14 (12-16)	9 (8-10)	11 (10-11)	11 (8-13)

Keragaan perikanan ADI di WPP 713 terkait strategi pemanenan (HS) serta aturan pengontrolan pemanenan (HCR)

L_m benchmarking for *Lutjanus malabaricus*



- Jumlah ikan: 1.638 ekor
- Ukuran terkecil– terbesar 28 – 97 cm (51.44 ± 12.65 cm)
- Proporsi tangkapan dgn ukuran lebih kecil dari *trade limit* 33 cm, 4.88%
- Proporsi ukuran lebih kecil dari L-m 50 cm, 34.31%
- Ukuran ikan pertama kali matang (bdsk hasil tangkapan), 59 cm (>50 cm).

Source: Mous *et al.* (2021). Length-Based Stock Assessment Of A Species Complex In Deepwater Demersal Fisheries Targeting Snappers In Indonesia Fishery Management Area WPP 713

Hubungan panjang-bobot

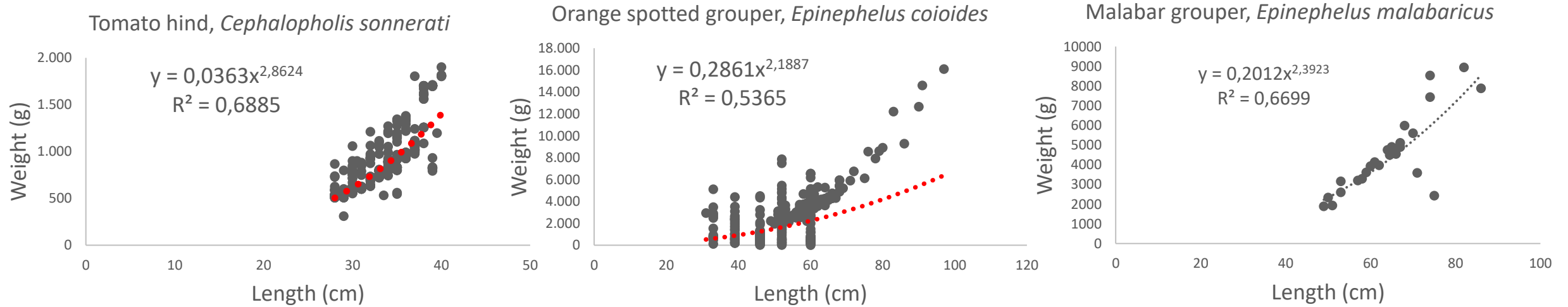
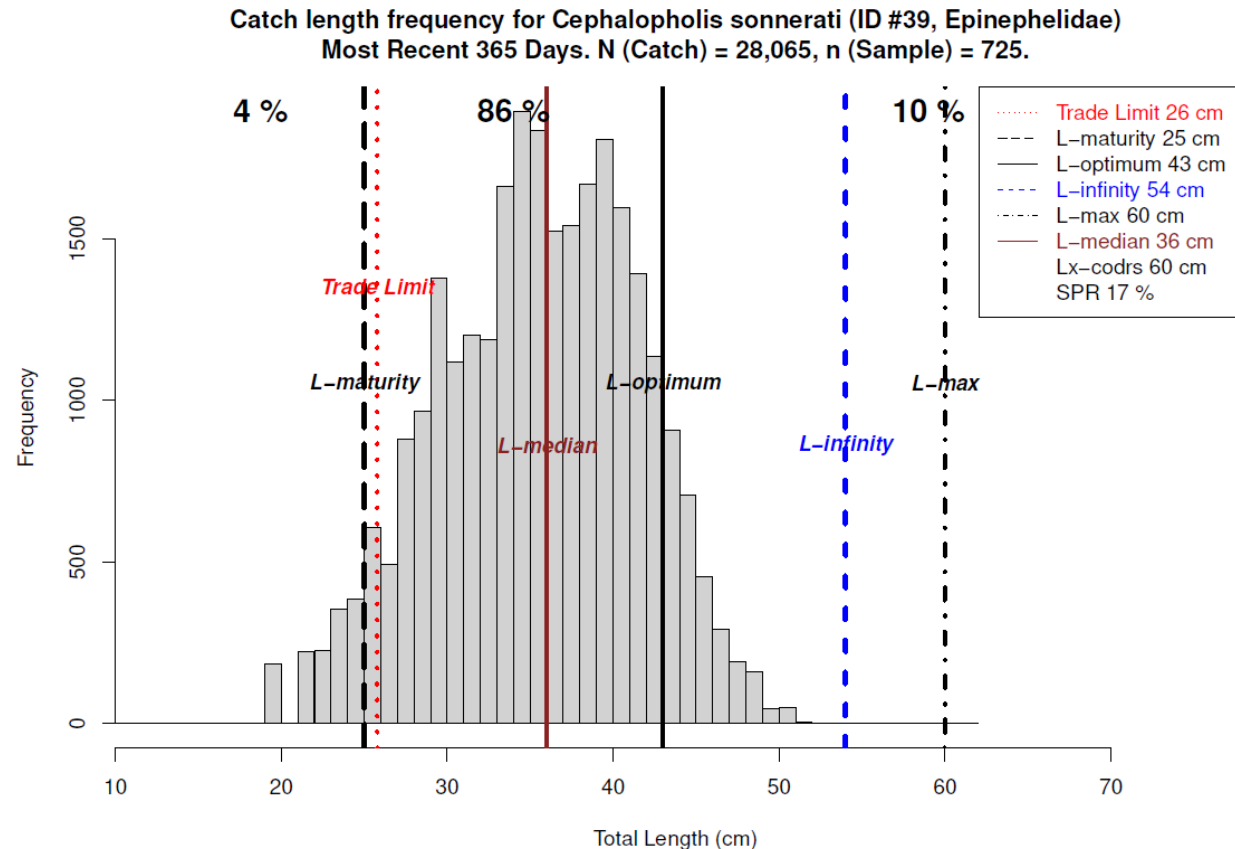


Figure. Length-weight relationship of three grouper species collected from FMA 713. Though with the smallest sample size, the relationship in Malabar grouper was the strongest ($R^2 = 67.0\%$, $N=26$), whereas tomato hind and orange-spotted grouper each with $N = 504$ and $N=254$ both coefficient determination (R^2) 69.0% and $54,0\%$, respectively.

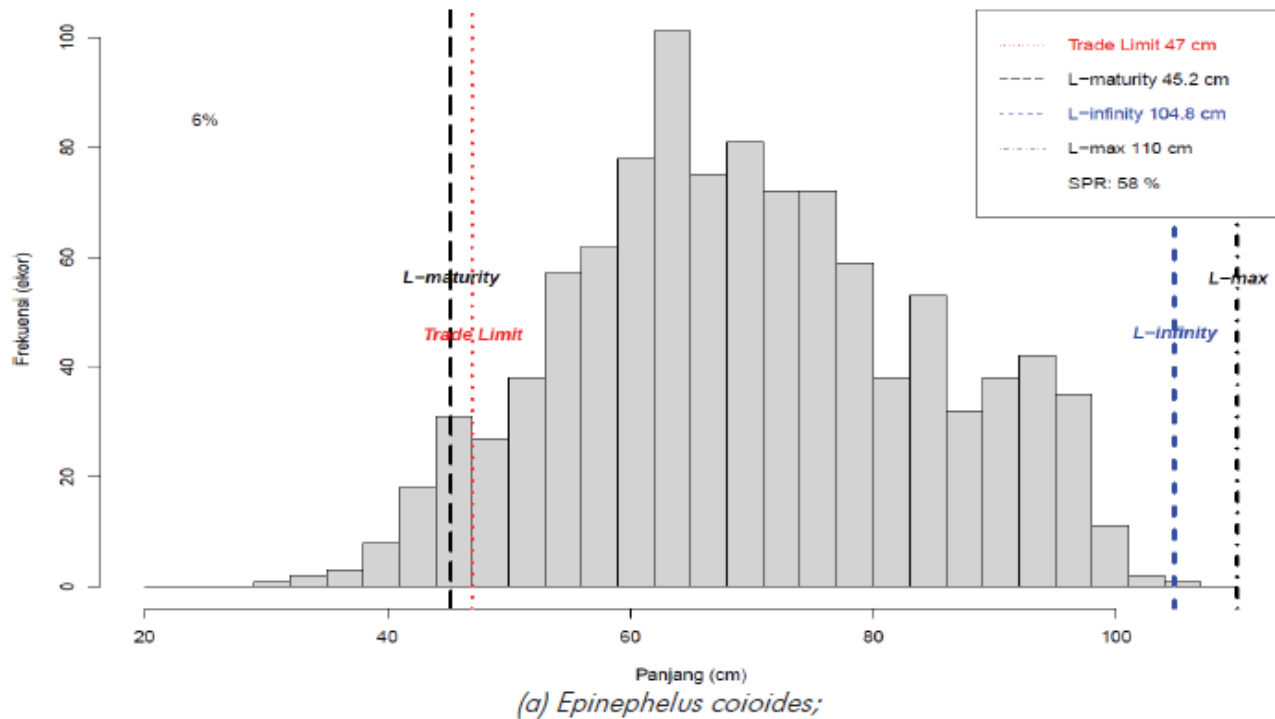
L_m benchmarking for *Cephalopholis sonnerati*



- Sample size: 504 individuals
- Min-max catches size 28 – 60 cm (33.74 – 3.07 cm)
- Catch size proportion smaller than trade limit 26 cm, 0 %
- Catch size proportion smaller than L-maturity 25 cm, 0 %
- Size at L_{50} -maturity, 35.5 cm (>25 cm).

Source: Mous *et al.* (2021). Length-Based Stock Assessment Of A Species Complex In Deepwater Demersal Fisheries Targeting Snappers In Indonesia Fishery Management Area WPP 713

L_m benchmarking for *Epinephelus coioides*



- Sample size: 254 individuals
- Min-max catches size 31 – 97 cm (53.72 – 11.02 cm)
- Catch size proportion smaller than trade limit 47 cm, 29.92 %
- Catch size proportion smaller than L-maturity 46.2 cm, 29.92%
- Size at L_{50} -maturity, 64 cm (>46.2 cm).

Source: DJPT-KKP RI (2020). Strategi Pemanfaatan Perikanan (Interim Harvest Strategy) Kerapu (Grouper) di Wilayah Pengelolaan Perikanan Negara Republik Indonesia WPPNRI) 713

Harapan industri dalam implementasi strategi pemanenan

- Kepastian kebijakan
- Pembinaan
- Penyederhanaan perizinan
- Sasaran utama dalam FIP
- Kemitraan yang lebih baik antara nelayan-industri-pemerintah-NGO
- Meningkatkan *branding* produk kakap-kerapu di pasar Internasional
- Isu ukuran pasar dalam negeri – luar negeri

Terimakasih