

# FCF DATA IMPROVEMENT PLAN: ELECTRONIC MONITORING PROJECT

## PROJECT DESCRIPTION

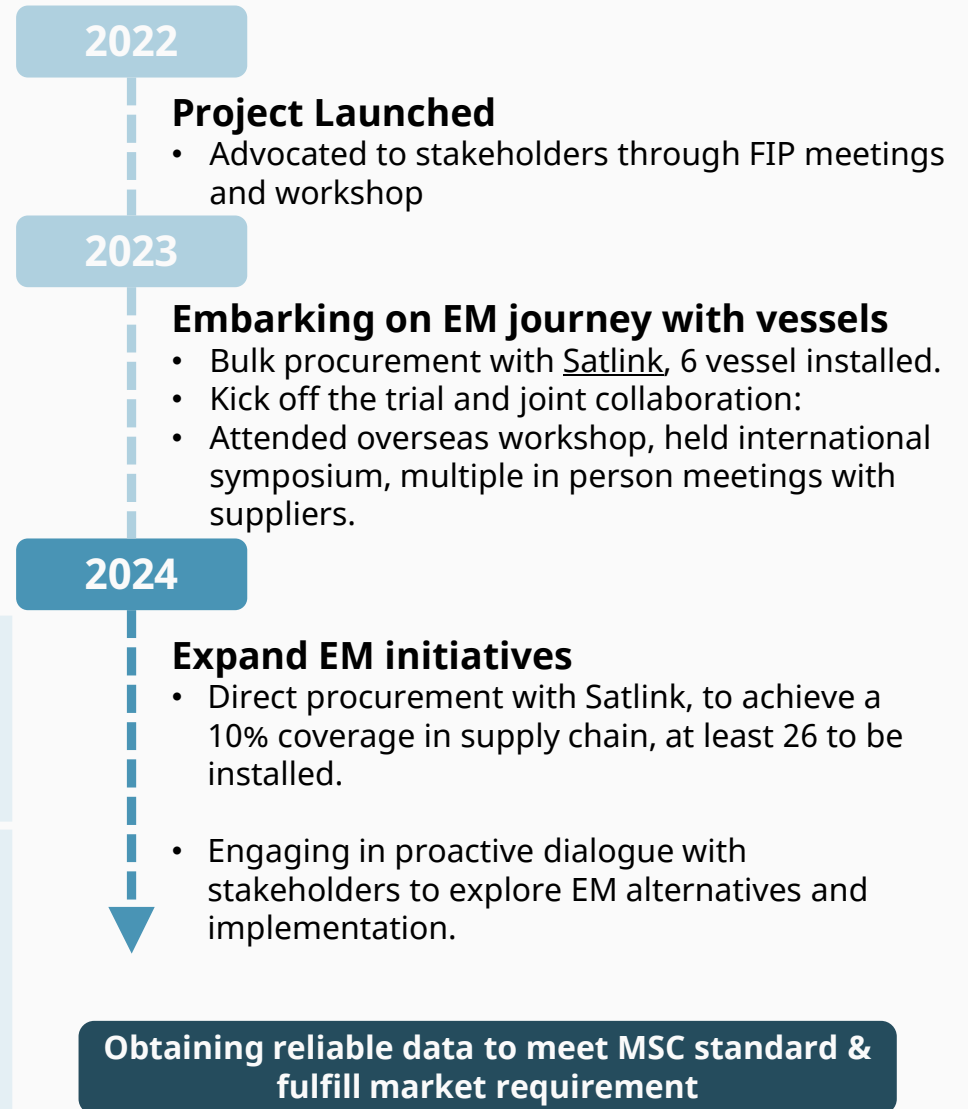
Data Improvement Plan is a project to improve the quantity and quality of independently verified data which is critical for science-based decision making and ultimately the conservation of sustainable health tuna stocks through onboard human observer and electronic monitoring systems.

## WHY IT MATTERS TO FCF?

Currently, tuna RFMO requires 5% independent observation coverage but MSC 3.0 standard requires 30%. FCF has identified gaps in approved independent data which needs to be addressed to meet FCF's goal for a MSC certified supply chain. Also, FCF is acting in response to Walmart's requirement of 100% monitoring (either electronic monitoring or human observer) by 2027.

## EFFORTS MADE

<p><b>Cost Reduction</b></p>	<p>Due to TFA subsidy policy, all Taiwanese vessels are required to equip with CCTV onboard, leading to improved monitoring management for vessels. FCF is exploring with other service provider and observer units on collecting CCTV footage for review to reduce hardware and maintenance cost.</p>
<p><b>Innovative Solutions</b></p>	<p>FCF participates in research programs and trials with governmental organizations, tech companies, NGOs, and academies to drive changes.</p> <ul style="list-style-type: none"> <li>• Low-orbit satellite and AI review on edge devices</li> <li>• Multi-orbit satellite and AI review of footage</li> <li>• Wireless, Remote EM and AI review</li> </ul>



# FCF DATA IMPROVEMENT PLAN: ELECTRONIC MONITORING PROJECT



## Support for alternative solutions

### Growth together with MSC Projects

Working with Satlink on enhancing scientific data for MSC projects.



### Collaborative Integration

Exploring to utilize CCTV onboard as camera for catch data

### Collab. With Tech company

Partnering with tech companies to apply AI technology in fisheries.

### Trial program

Exploring involvement in more potential innovative alternative solutions.



### Academic R&D

Developing AI technology on reviewing catch data