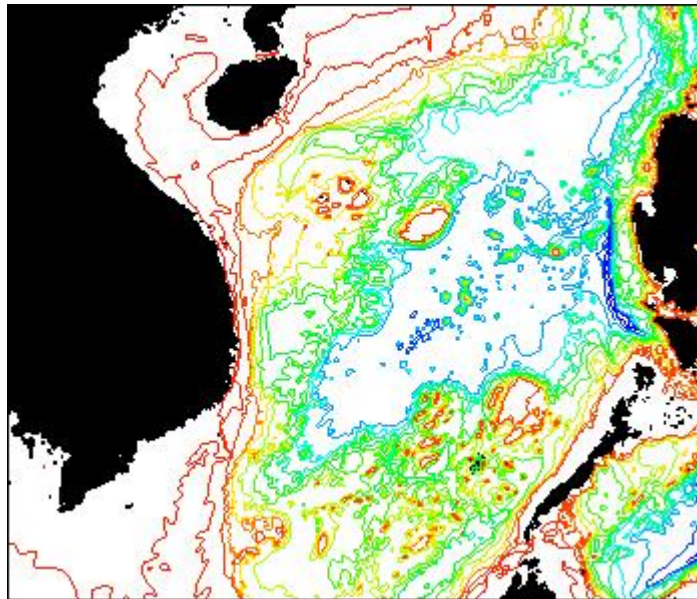


Tenth Vietnam/WCPFC Annual Tuna Fisheries Catch Estimates Workshop

22-23 April 2021, Nha Trang, Khanh Hoa, Vietnam

ANNUAL CATCH ESTIMATES

WCPFC requirements and expected outputs of workshop



Western Central Pacific Fisheries Commission (WCPFC)



Presentation outline

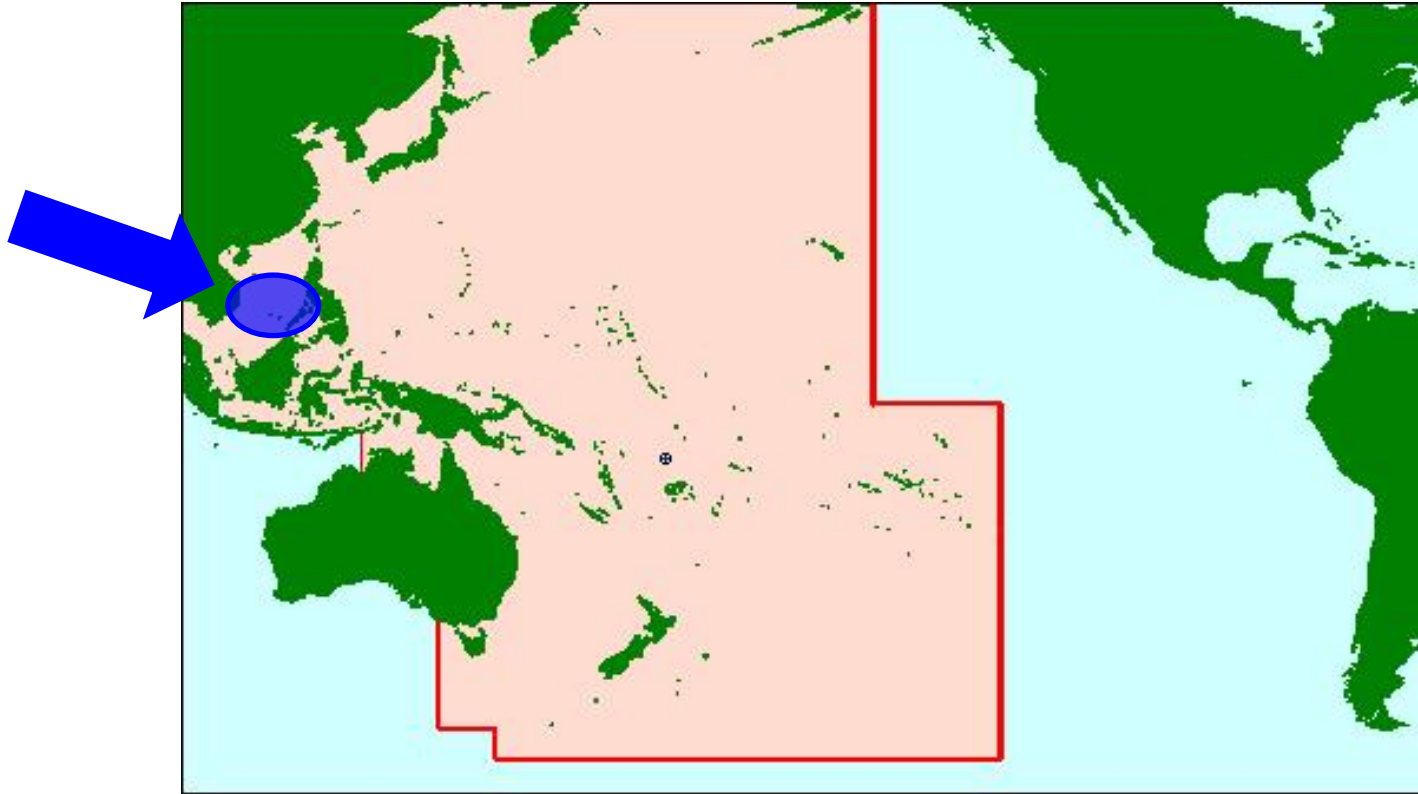
Importance of scientific data

WCPFC Data reporting obligations

Main outcome of VTFACE-10 → Annual catch estimates

Data obligations to the WCPFC

SCIENTIFIC DATA required for WCPFC CONVENTION STATISTICAL AREA



SCIENTIFIC DATA are used to determine STATUS OF STOCKS and provide advice to the WCPFC member countries for the sustainable management of their stocks

WCPFC – Key species

Bigeye tuna



Skipjack tuna



Yellowfin tuna



Albacore tuna



Swordfish



Blue Marlin



Black Marlin



Striped Marlin



Blue shark



Silky shark



Oceanic Whitetip shark



Mako sharks (2 spp.)



Thresher sharks (3 spp.)



Porbeagle shark



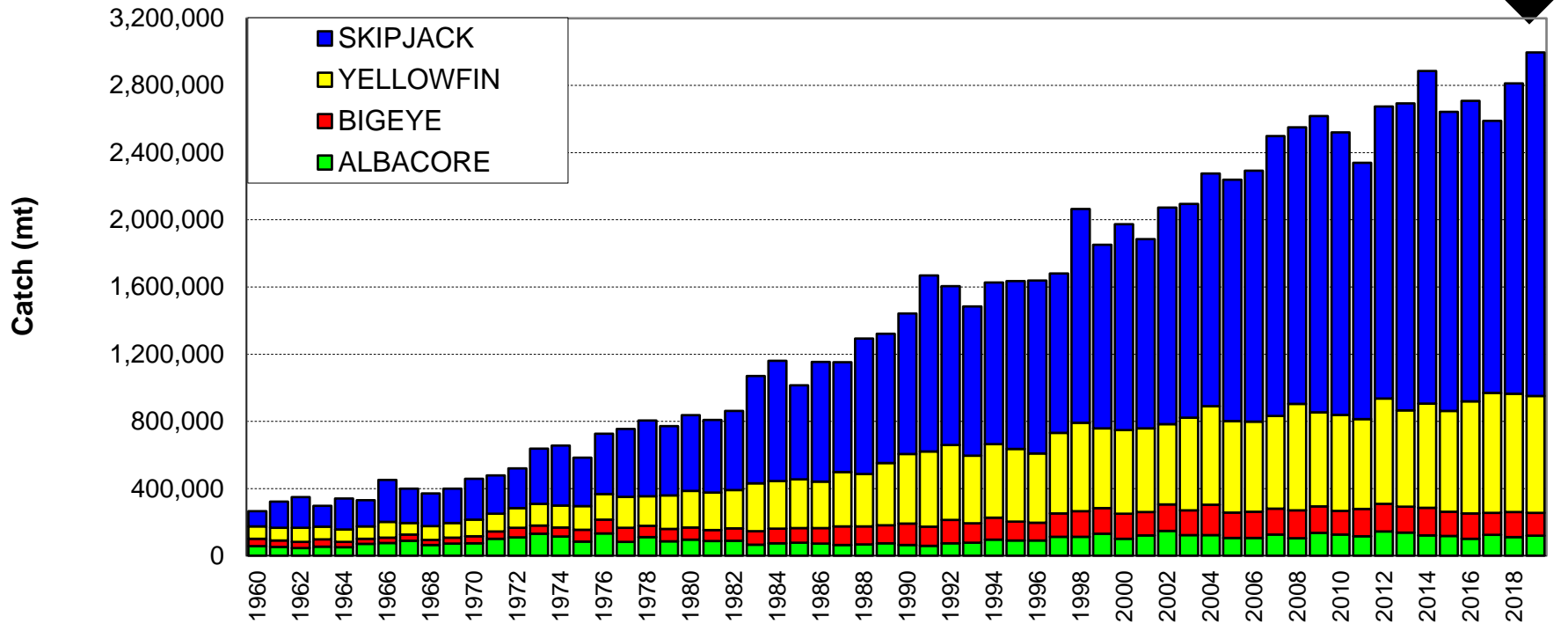
Hammerhead sharks (4 spp.)



Whale shark



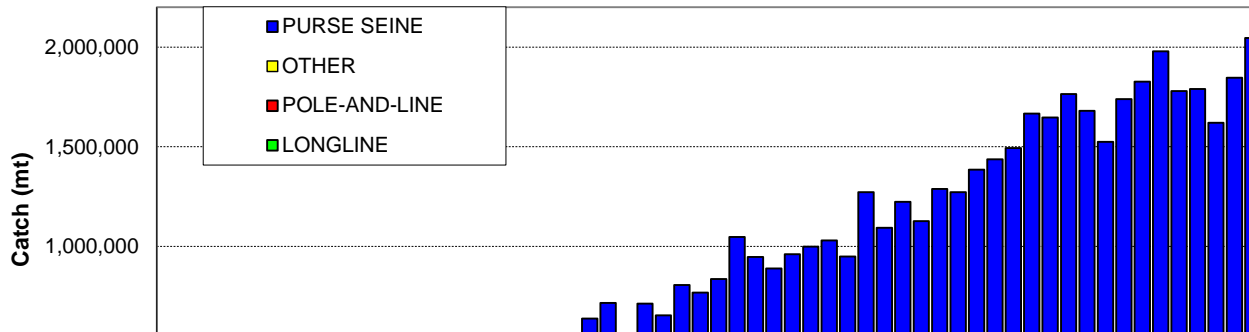
WCPFC Tuna Catch by Species



Catch for 2019

- Highest on record (3 million tonnes)

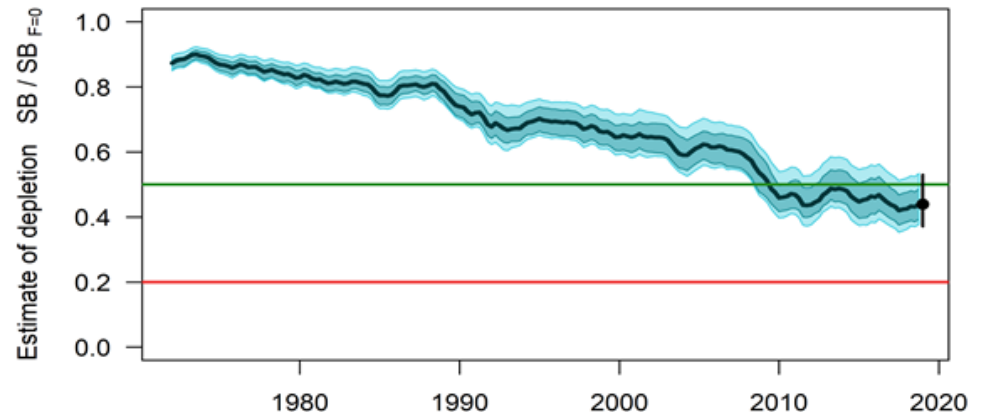
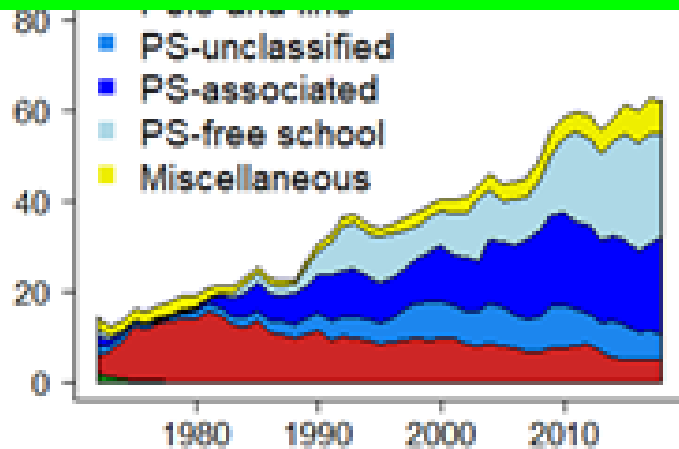
WCPFC Skipjack tuna



No OVERFISHING, not OVERFISHED

Stock around the TRP (green line below right)

(2019)



Scientific data provided to the WCPFC

Reporting obligations

Types of data to be provided :

- **Annual catch estimates**

- Number of vessels active
- Operational catch and effort data
(e.g. National logbook data)
- Aggregated catch and effort data
(e.g. National logbook data)
- Size composition data
(e.g. WPEA port sampling and observer length data...)

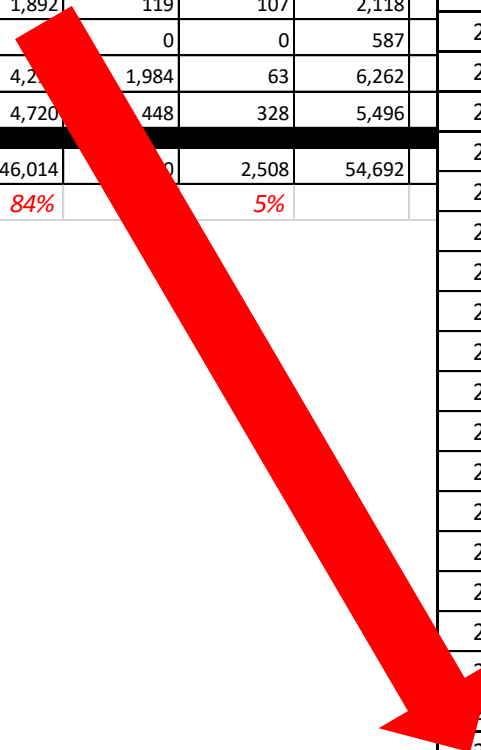
ANNUAL CATCH ESTIMATES

Types of data used by WCPFC MEMBER COUNTRIES to produce ANNUAL CATCH ESTIMATES

Data type	Used for...
LOGBOOKS	Catch VOLUME
LANDINGS	Catch VOLUME
PORT SAMPLING	Species composition
OBSERVER	Species composition
VMS, Coastguard data	Coverage
INDUSTRY data	Reconciliation
Other stakeholder data (e.g. FIPs)	Reconciliation
IMPORTS/EXPORTS data	Reconciliation
...	

Expected outcomes from the Workshop -- Example

PURSE SEINE													
Province	AGREED CATCH ESTIMATES (MT)				Trips	Sub_DECAFIREF Estimate				WPEA Raised LANDINGS			
	SKJ	YFT	BET	TOTAL TUNA		SKJ	YFT	BET	TOTAL TUNA	SKJ	YFT	BET	TOTAL TUNA
Binh Dinh	13,844	1,236	685	15,765	TOTAL TUNA CATCHES BY GEAR								
Khanh Hoa	2,105	293	103	2,501	Year	Active vessels	Estimated Tuna Catch (metric tonnes)						
Phu Yen	4,984	744	272	6,000			HANDLINE	%	PURSE SEINE	%	GILLNET	%	Total tuna
Da Nang	11,088	733	797	12,618	2000	0	9,266	28%	15,367	46%	9,001	27%	33,634
Quang Nam	2,579	613	153	3,345	2001	0	9,753	28%	16,174	46%	9,474	27%	35,400
Quang Ngai	1,892	119	107	2,118	2002	0	10,382	28%	17,218	46%	10,085	27%	37,685
Ninh Thuan		0	0	587	2003	0	10,320	28%	17,115	46%	10,025	27%	37,460
Binh Thuan	4,200	1,984	63	6,262	2004	0	13,918	28%	23,082	46%	13,520	27%	50,520
Ba Ria - Vung Tau	4,720	448	328	5,496	2005	0	14,438	28%	23,945	46%	14,026	27%	52,408
Total	46,014	0	2,508	54,692	2006	0	14,483	28%	24,020	46%	14,070	27%	52,573
	84%		5%		2007	0	14,935	28%	24,768	46%	14,508	27%	54,211
					2008	0	13,748	28%	22,800	46%	13,355	27%	49,903
					2009	0	12,249	28%	17,234	39%	14,757	33%	44,241
					2010	0	11,958	29%	16,253	39%	13,454	32%	41,665
					2011	0	11,967	28%	17,234	40%	13,454	32%	42,655
					2012	0	16,230	25%	26,939	41%	22,375	34%	65,544
					2013	0	16,428	21%	22,484	29%	39,720	51%	78,632
					2014	0	13,953	17%	33,286	41%	33,603	42%	80,842
					2015	0	18,197	20%	38,902	44%	31,964	36%	89,063
					2016	0	17,538	14%	58,099	47%	47,439	39%	123,076
					2017	0	16,681	15%	54,692	49%	41,252	37%	112,625
					2018	0	16,681	15%	54,692	49%	41,252	37%	112,625
					2019	0	17,402	14%	68,105	57%	35,026	29%	120,533
					2020	0	18,197	20%	38,902	44%	31,964	36%	89,063

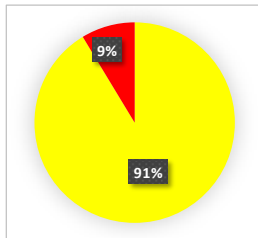


Vietnam Tuna Fishery data

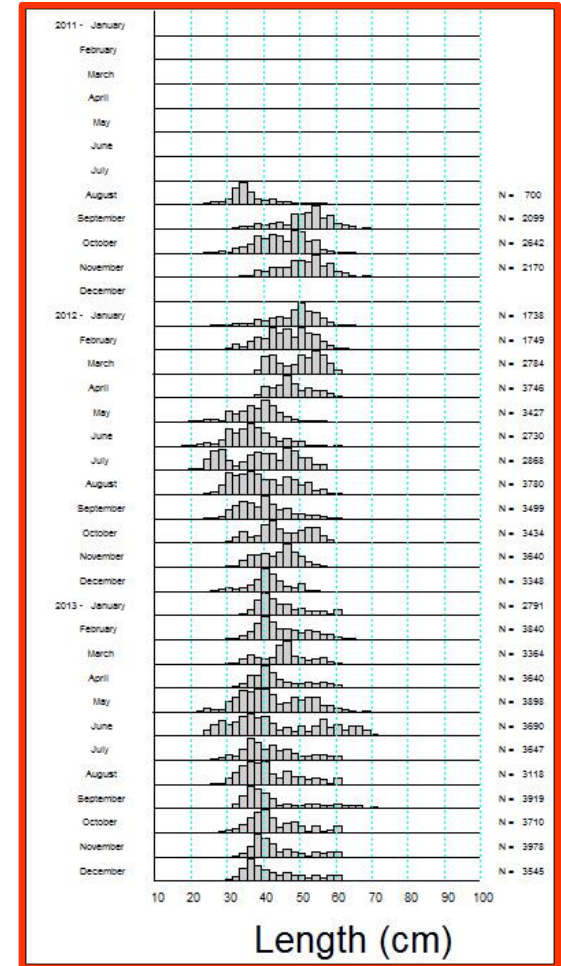
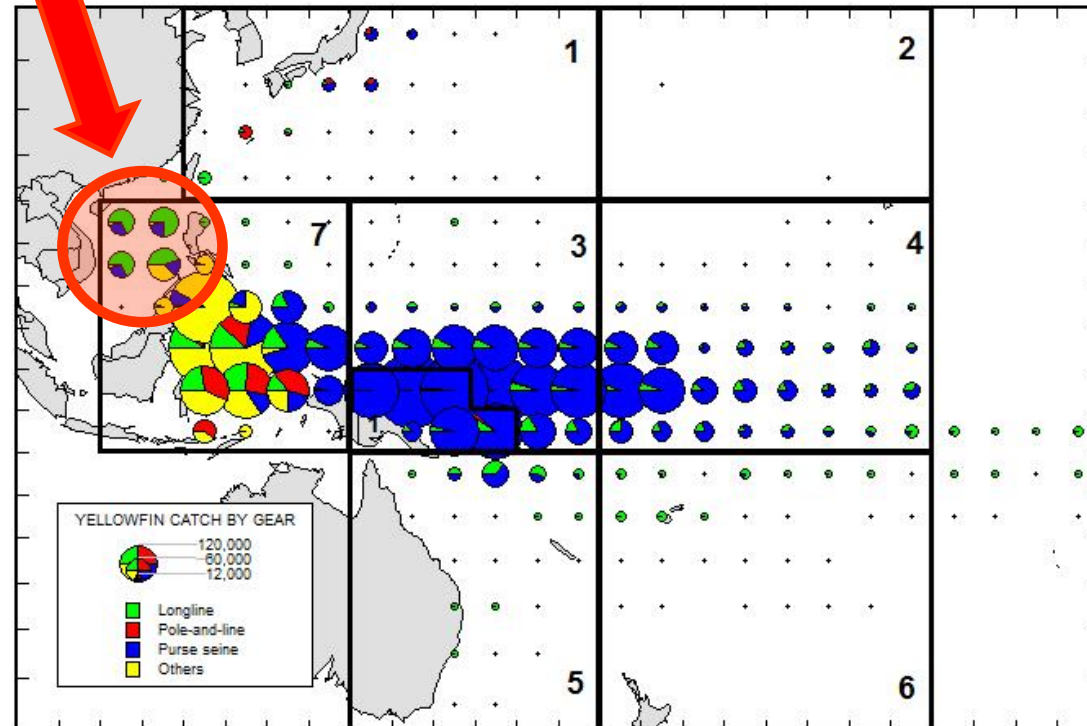
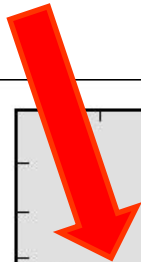
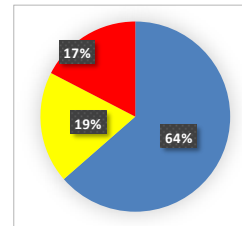
Vietnam data are included in the Regional tuna assessments !

Opportunity to REVIEW DATA later in VTFACE-10 !

Longline species comp.



Gillnet species comp.



Gillnet SKJ size data

Vietnam tuna fishery data

YOUR Estimates and Data

... a progressively useful TIME SERIES of
Estimates, logbooks and SIZE DATA...

[For your national requirements](#)

XIN CẢM ƠN!

Congratulations !

(more work to do ...)



from the WCPFC/SPC scientists