

Suriname Corvina and Acoupa Weakfish FIP

Implementing observer and fisher-as-observer data collection programs

T. Willems tomas.willems@cedepesca.net

2025-01-30

Introduction

To monitor ecosystem interactions in the fisheries included in the Suriname Corvina and Acoupa Weakfish FIP, two data collection programs have been deployed.

In the trawl sub-fishery, CeDePesca, in collaboration with the Suriname Fisheries Department, has introduced an *observer program*. Two observers are deployed at a time, monitoring catch and bycatch in the trawl fishery, including interactions with vulnerable habitats and ETP species.

Due to limited space onboard, it is not possible to send observers onboard the vessels in the driftnet sub-fishery. Therefore, a *fisher-as-observer program* was implemented in this fishery. Captains were trained in data collection, focussing on interactions with ETP species.

Observer program

Up to November 2024, 13 trips were monitored under the observer program, with data collected for 334 hauls.

Spatial coverage of the data collected under the observer program is shown below in a pointmap and a heatmap.

Fisher-as-observer program

Up to November 2024, 49 trips were monitored under the fisher-as-observer program, with data collected for 1053 hauls.

Spatial coverage of the data collected under the observer program is shown below in a pointmap and a heatmap.

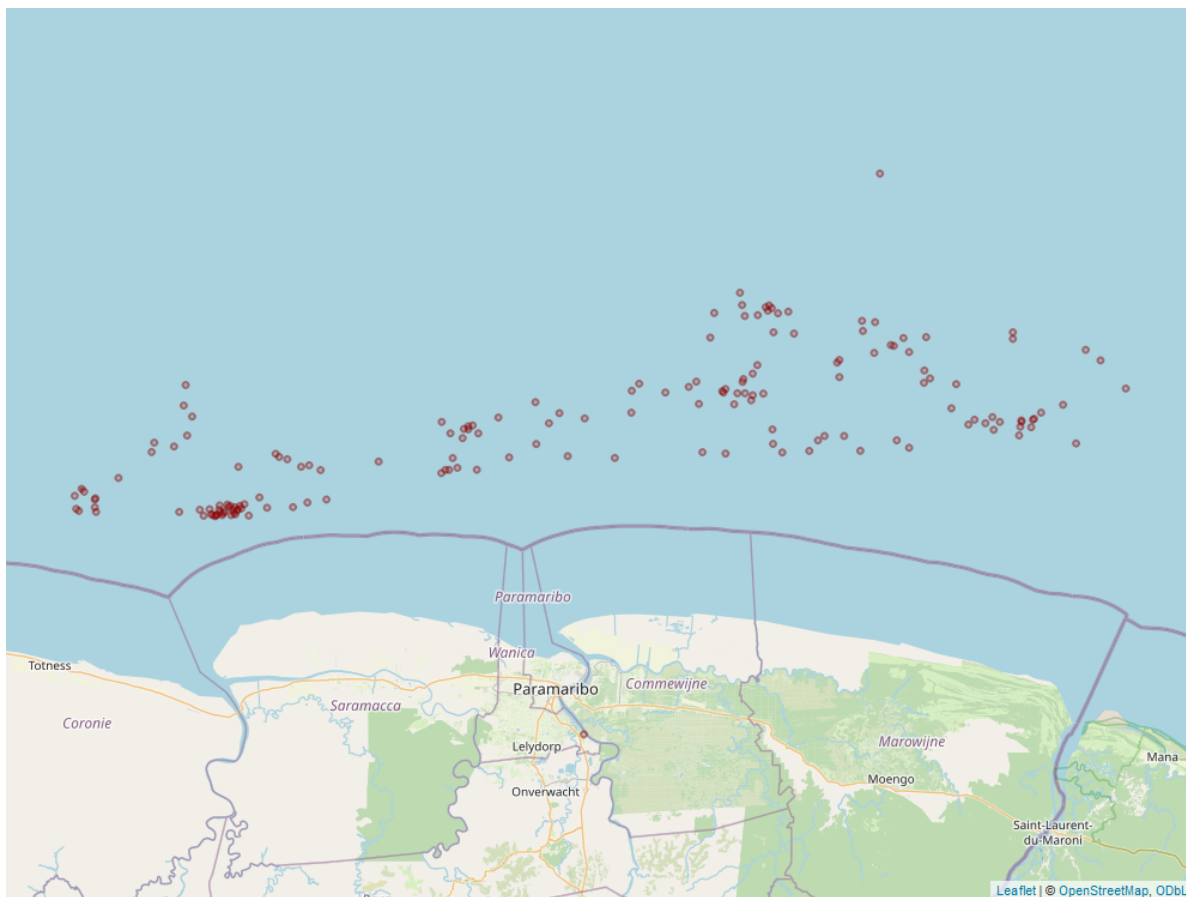


Figure 1: Pointmap of observer program. Each point represents a sampled haul.

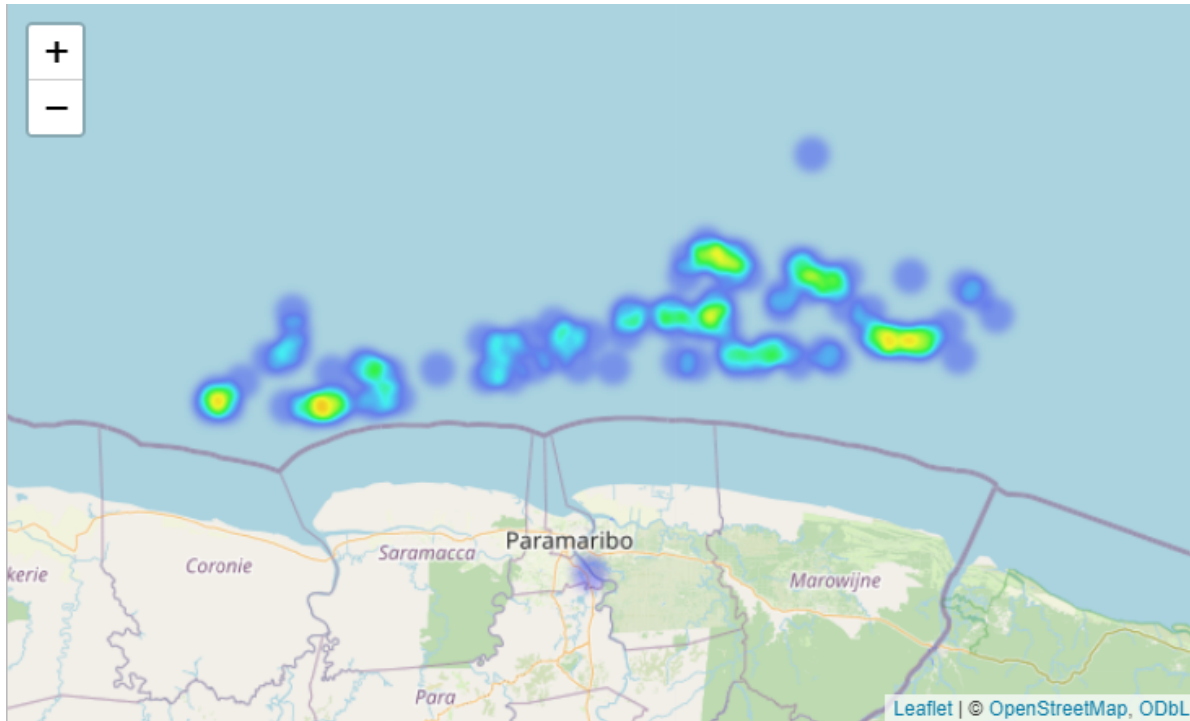


Figure 2: Heatmap of the observer program. Darker colors refer to areas with more sampled hauls.

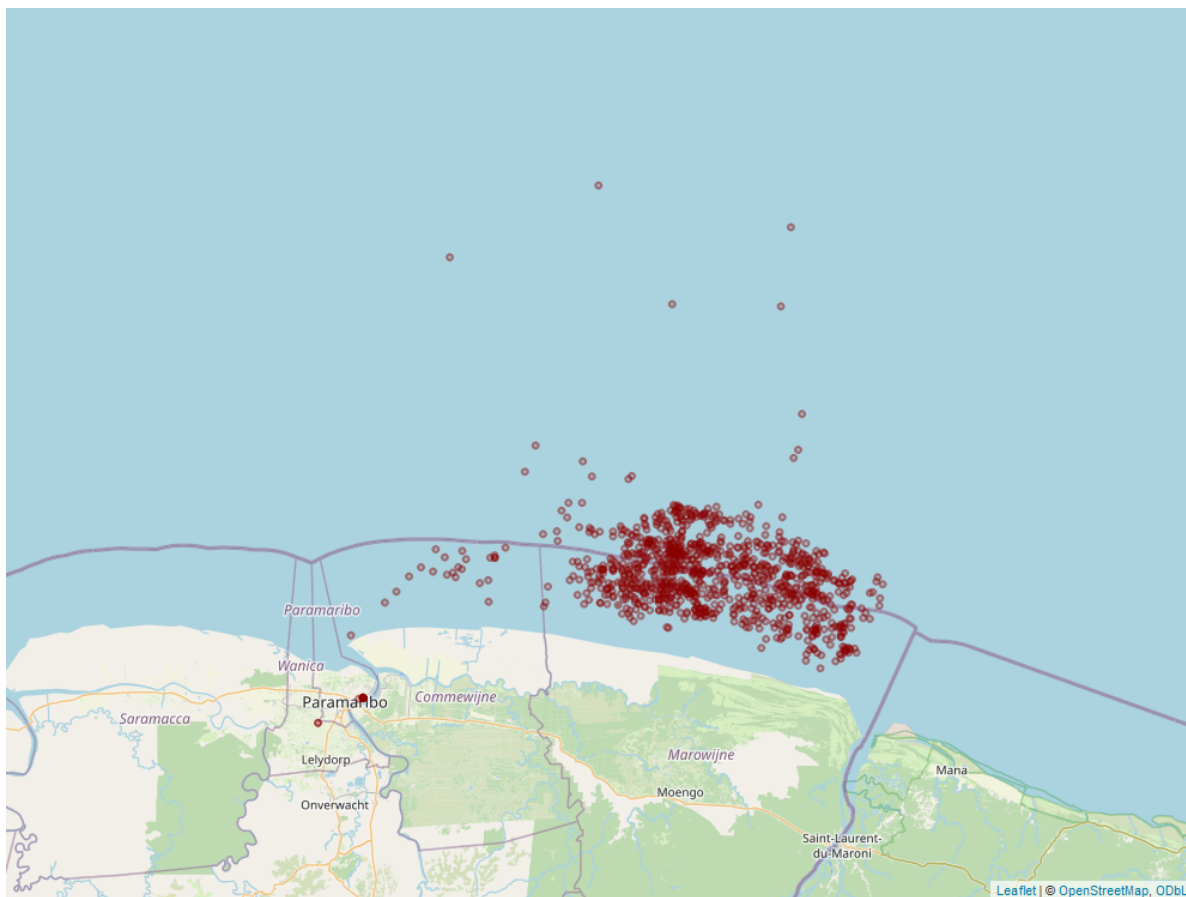


Figure 3: Pointmap of observer program. Each point represents a sampled haul.

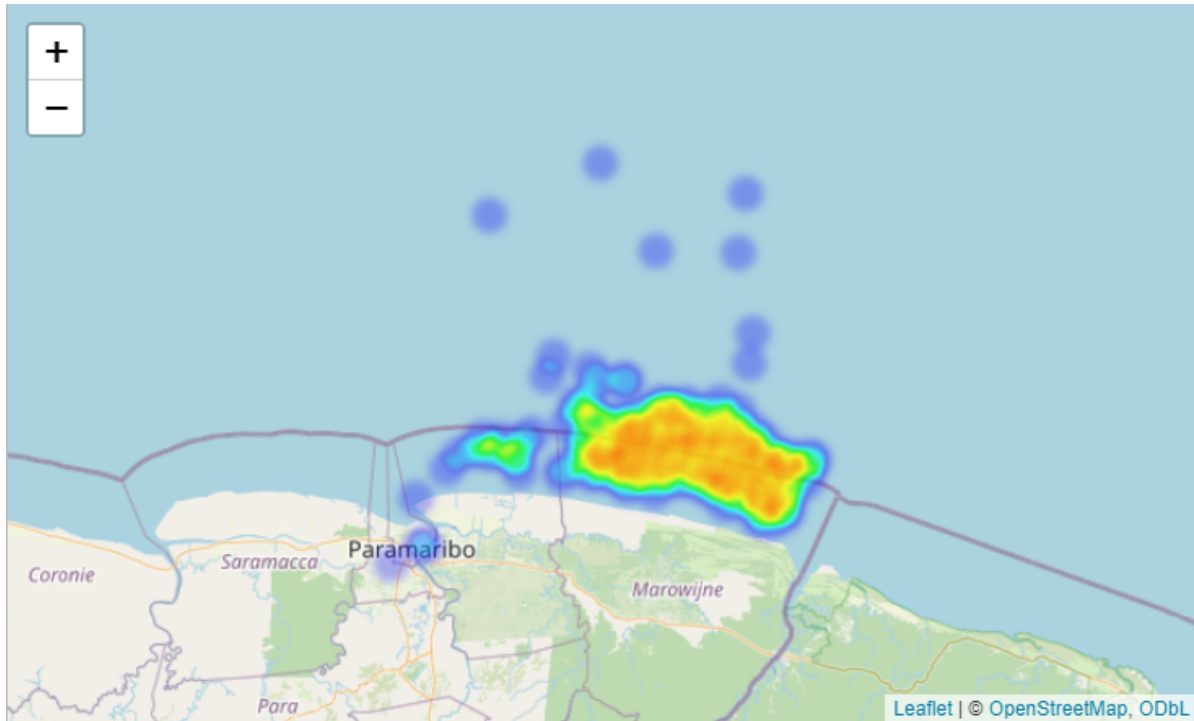


Figure 4: Heatmap of the observer program. Darker colors refer to areas with more sampled hauls.