

STOCK ENHANCEMENT LOCATION SURVEY
AUGUST 2022

LOCATION

The location that is one of the options for stock enhancement activities is the Field Practice Station of the Sidoarjo Marine and Fisheries Polytechnic which is located in Paciran, Lamongan, East Java. This location is right beside the sea.

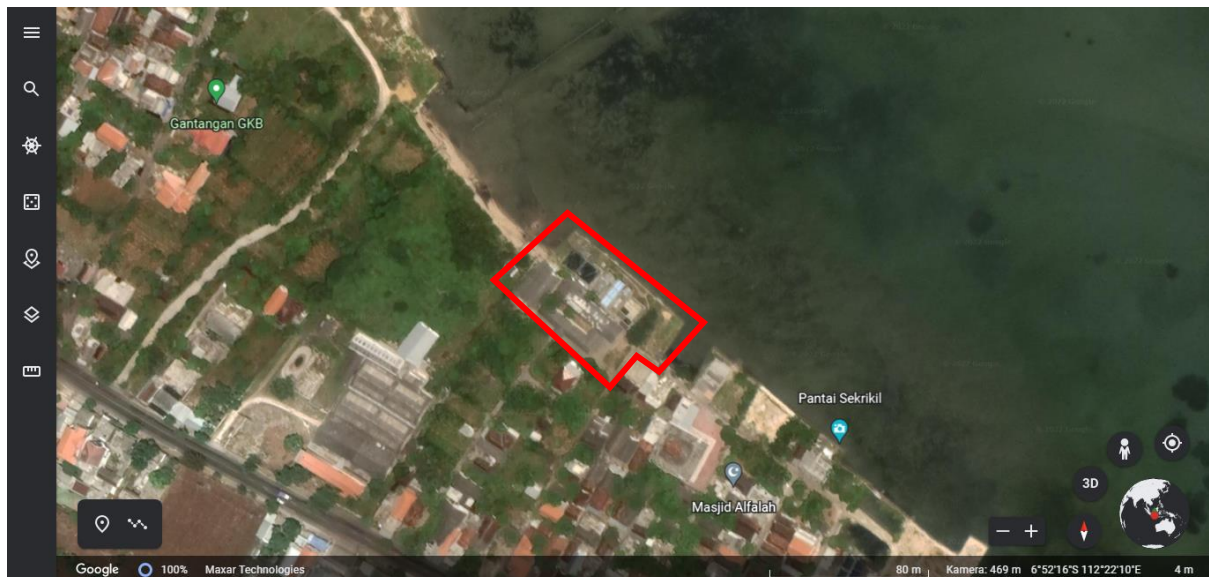
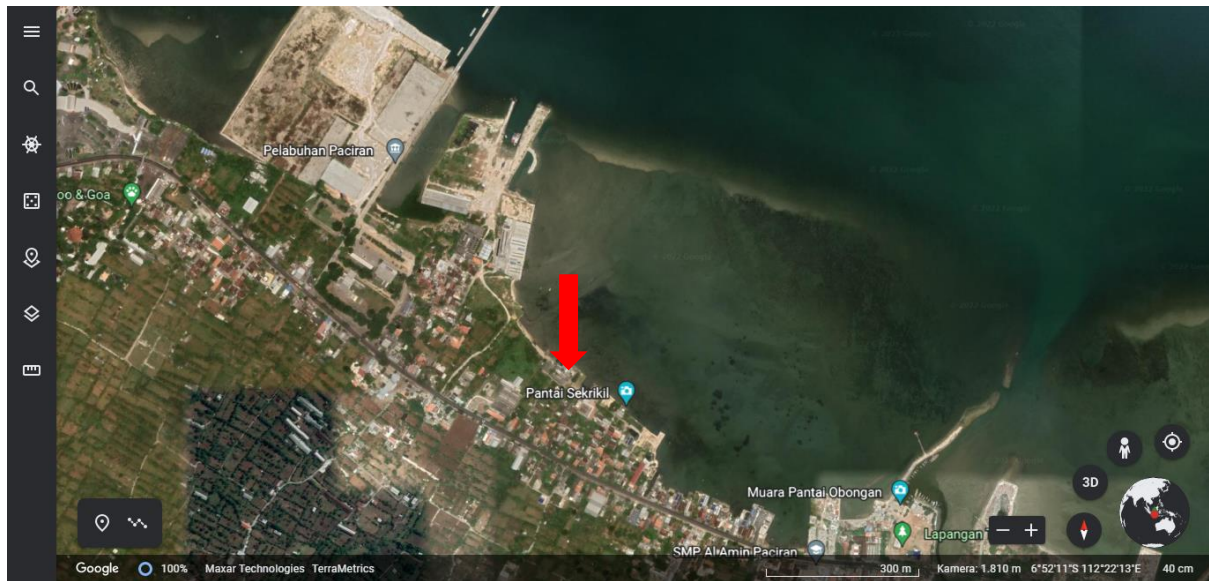


Fig 1. Hatchery location in Paciran, Lamongan, East Java

ACCESSIBILITY

To get to the location, it takes a land trip of approximately 2 hours by car from Surabaya. For researchers from abroad, they can use a plane and land at Juanda Airport, Surabaya and continue with a road trip. Road conditions along the road trip are quite good, although there are congestion points.

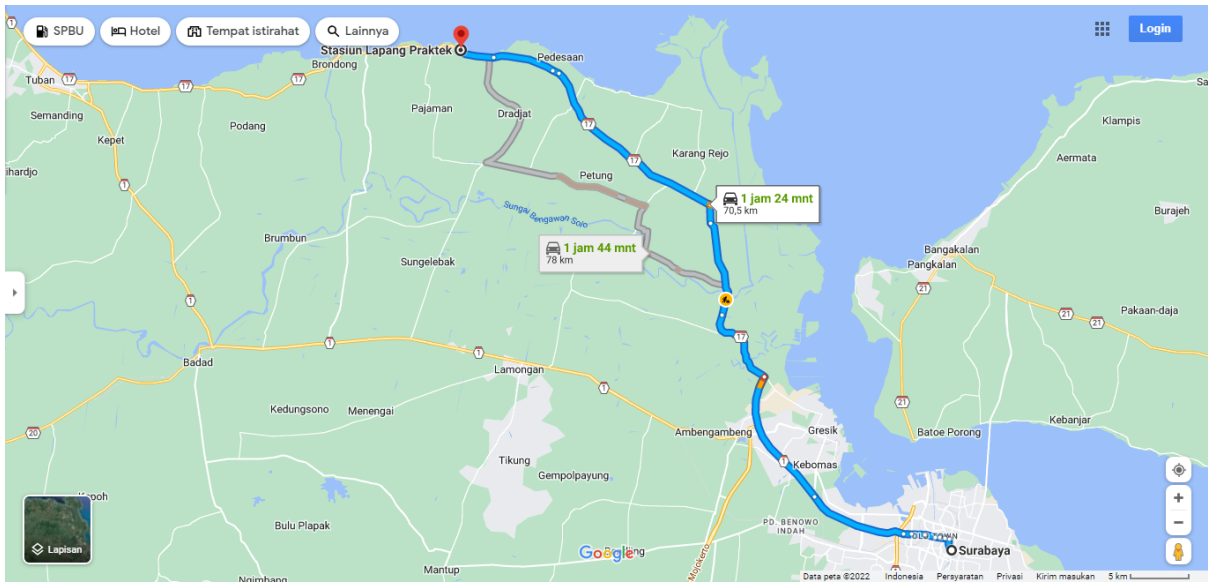


Fig 2. Route and travel time from Surabaya to the hatchery location

FACILITY

Hatchery Pond

This location has quite a number of both indoor and outdoor ponds. There are at least 8 indoor ponds, and 20 outdoor ponds.



Fig 3. Indoor ponds in hatchery location



Fig 4. Indoor ponds in hatchery location



Fig 5. Outdoor ponds in hatchery location



Fig 6. Outdoor ponds in hatchery location



Fig 7. Outdoor ponds in hatchery location (currently used for shrimp)

Irrigation

The water supplied to the ponds here is from sea water which is sucked in using a water pump. Before entering the ponds, the water is filtered through a filter that is around the end of the pipe that leads to the pond. Water management is also carried out using a blower that is centralized in one place with a power of 3000 watts. Currently there are two ponds used for shrimp with a current age of approximately 3 weeks. The pond used for the shrimp uses microbubble.



Fig 8. Location of the hatchery which is directly adjacent to the sea, there is a pipe that flows sea water to the pond

Other Supporting Facilities

In addition to the hatchery ponds, this location has several rooms including one meeting room/hall room located at the front after the entrance, several rooms to stay, as well as several bathrooms/toilets.



Fig 9. Meeting room/hall room

RESOURCES AVAILABILITY

Blue Swimming Crab Broodstock

This location is not too far from the APRI data collection location, which is located in Mengare, Gresik, which is approximately 1 hour away. This then makes it easier to obtain the crab broods that are needed for the hatchery activity. In addition, in Paciran itself there are several crab landing locations, so that it will make it easier to provide crabs as brooders and so on.

Human Resources

At the hatchery location there is at least one officer who maintains the facility. In addition, APRI has several personnel who are close to the hatchery location so that it is possible to carry out routine monitoring.

Environment

Around the hatchery location, there are several locations that possible for post-hatchery activities such as releasing crab in the waters. Some locations have mangrove areas as crab nursery ground, with a travel time of 15-30 minutes. However, a survey related to environment, fishing activities, and water conditions may need to be carried out in order to better understand the environmental conditions around the hatchery location.

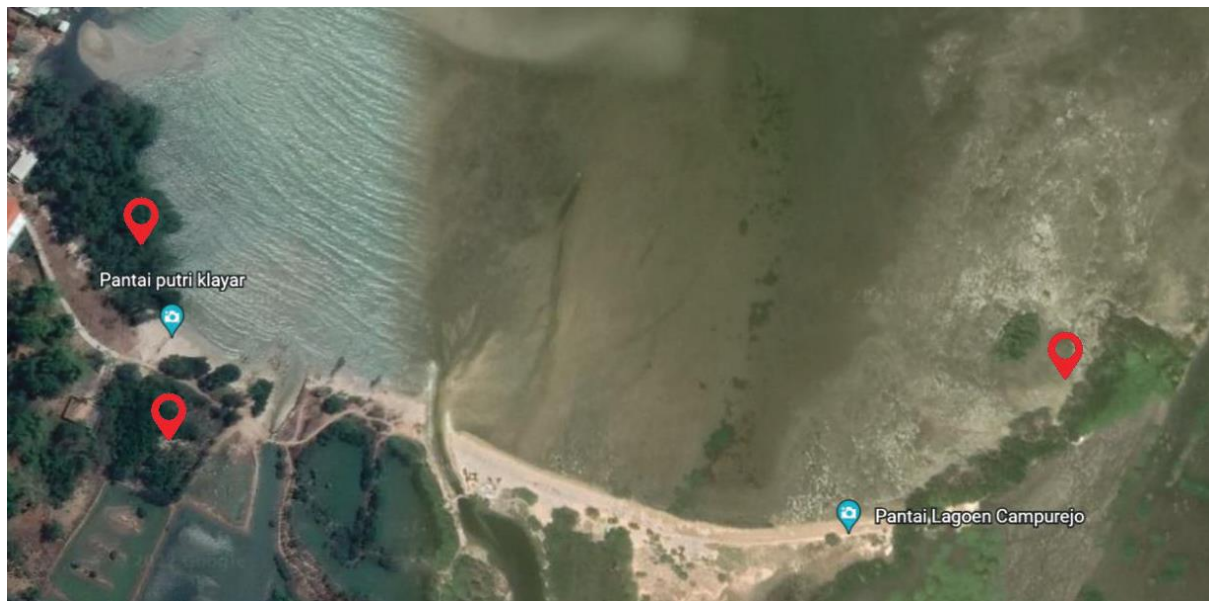


Fig 10. One of the mangrove area near the hatchery location (travel time ± 15 minutes), fishermen around this location only catch fish