
Data

Colors

Layers

Choose date(s):

- Specific date
- Date range
- Range among years

2021-04-05

to

2021-06-30

Choose platform(s):

Slocum Glider Plane Vessel RPAS Buoy
Opportunistic

Choose platform name(s):All

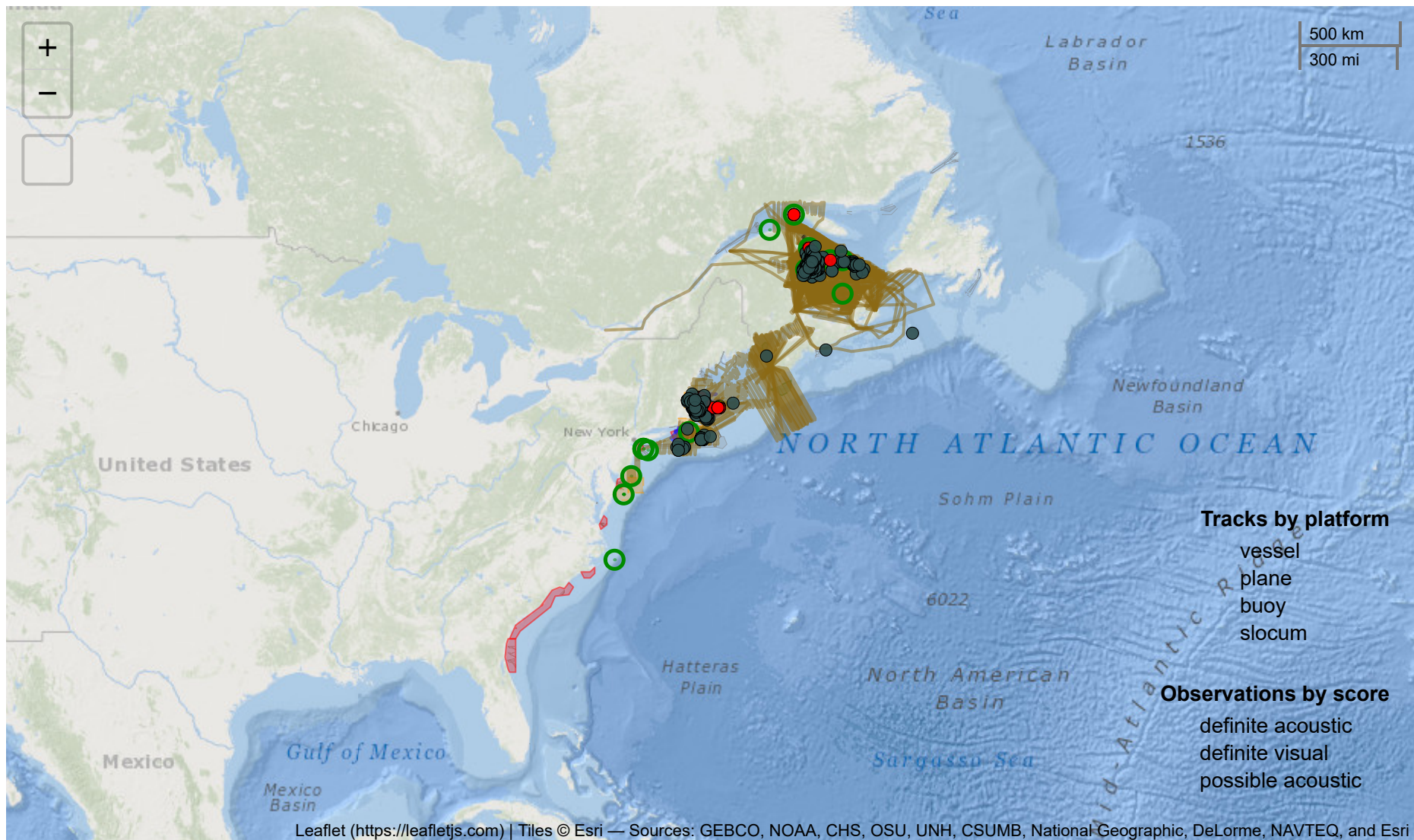
Choose species:Right whale

Choose data layer(s):

- Tracks
- Possible detections/sightings
- Definite detections/sightings
-

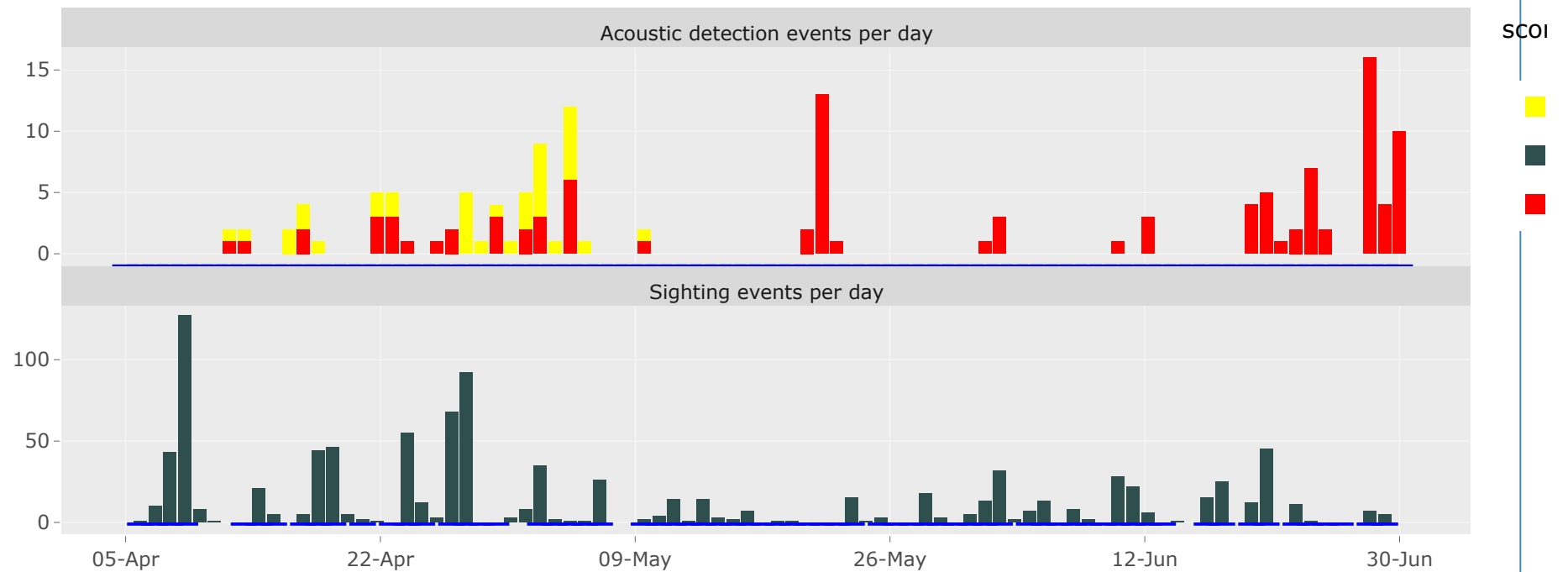
Show unverified data:

Map



These data are preliminary data, subject to change, and not to be used without permission from the contributor(s)

Plot



The blue dashed line indicates days with survey effort

Only plot data within map bounds?

Currently viewing:

Species: right

Number of definite sighting events: 974

Number of whales sighted (includes duplicates): 1501

Number of possible sighting events: 0

Number of whales possibly sighted: 0

Number of definite detections: 104
Number of possible detections: 37
Earliest observation: 2021-04-06
Most recent observation: 2021-06-30
Most recent position: 47.7833, -64.0333

Status: —

Platform	Last processed [UTC]
WHOI acoustic detections (http://dcs.who.edu/)	2022-03-07 19:30:27
Southeast US aerial surveys (https://mission.cmaquarium.org/research-institute/right-whale-research/)	2022-03-07 19:01:00
New England Aquarium SNE vessel survey sightings/tracks (https://www.andersoncabotcenterforoceanlife.org/rightwhales/right-whales/)	2022-03-06 02:15:21
NOAA NEFSC aerial survey sightings/tracks (https://www.nefsc.noaa.gov/psb/surveys/NARWSS.html)	2022-03-06 00:30:33
New England Aquarium aerial survey sightings/tracks (https://www.andersoncabotcenterforoceanlife.org/rightwhales/right-whales/)	2022-03-01 21:30:26
Center for Coastal Studies aerial surveys (https://coastalstudies.org/)	2022-01-16 21:46:27

This shows when data from a particular platform were last processed by the WhaleMap system. Errors in processing are indicated by an error message in place of a timestamp.

Go!