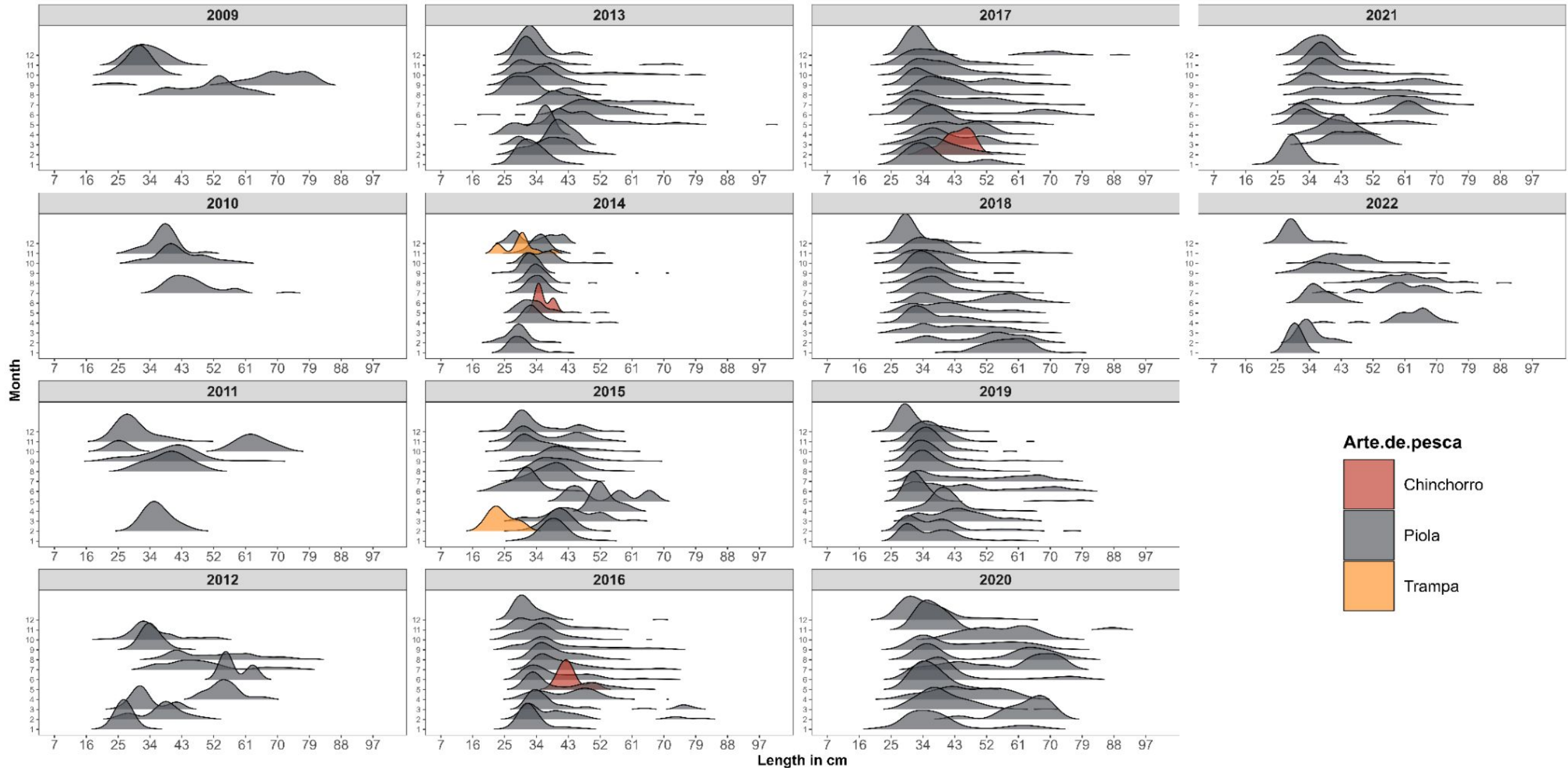


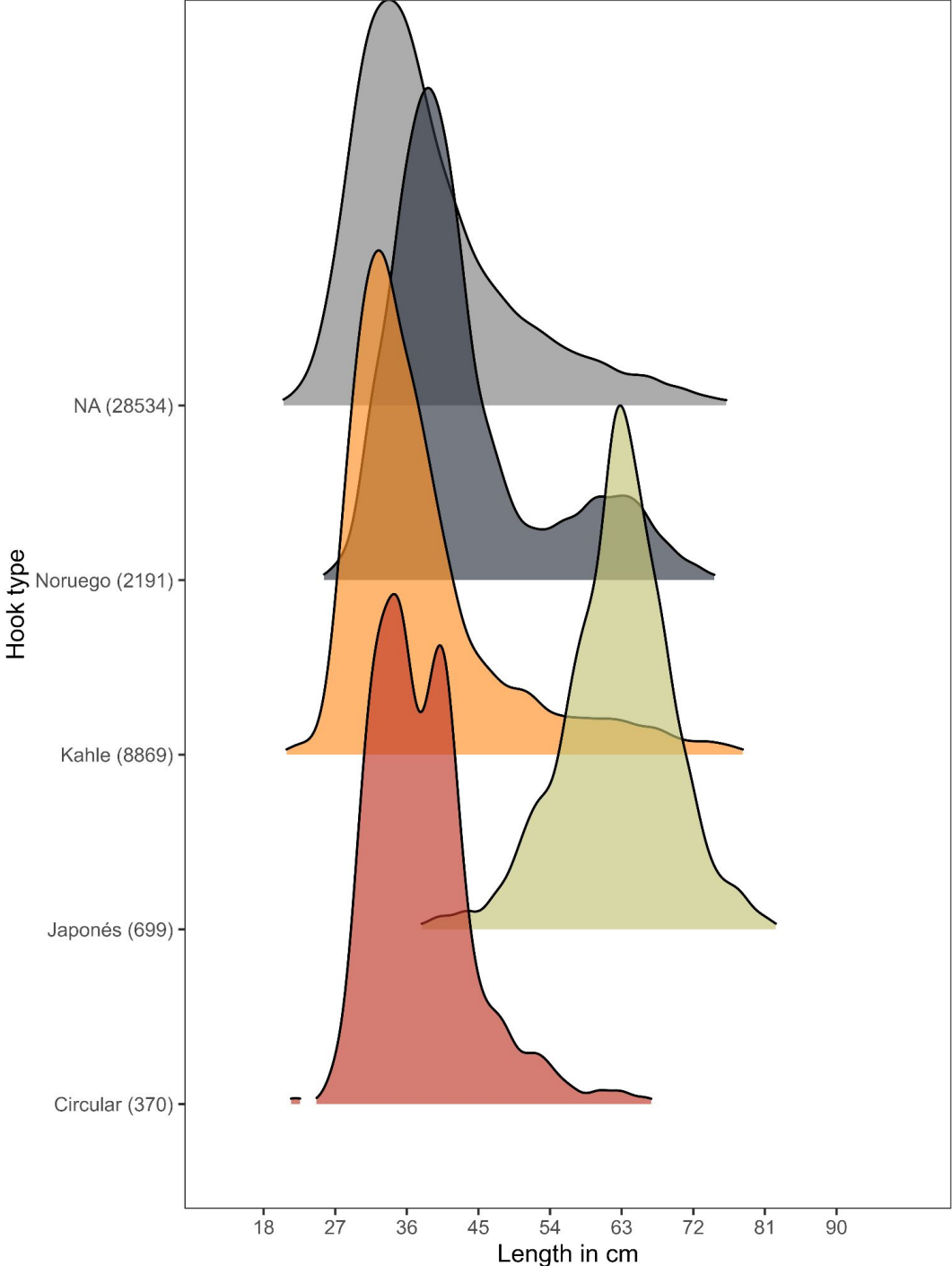
Questions / suggestions from reviewers

- **Length Frequency Distribution** - to see if they are stable (huachinango, year, month and fishing gear)

Monthly length distributions by year and fishing gear



Type of hook

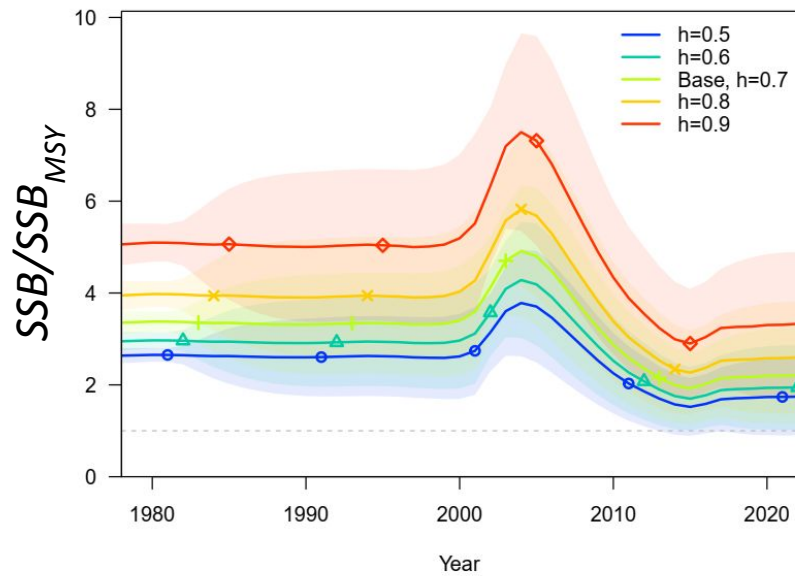


Questions / suggestions from reviewers

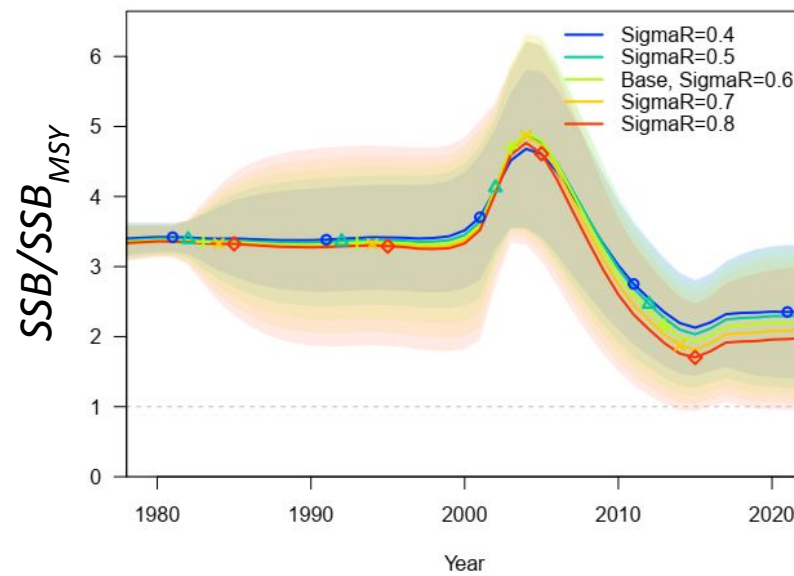
- **Selectivity** - run model with another scenario that is not fully dommed to see potential differences in results
- Relative scales in comparison plots for sensitivities
- Magnitude of catches from SIPESCA

OLD SENSITIVITIES, RELATIVE SCALE

STEEPNESS

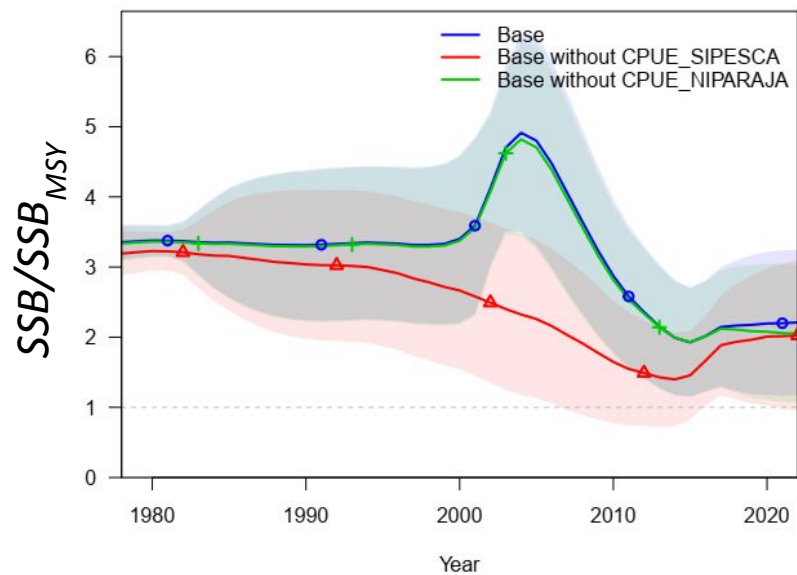


SSB/SSB_{MSY}

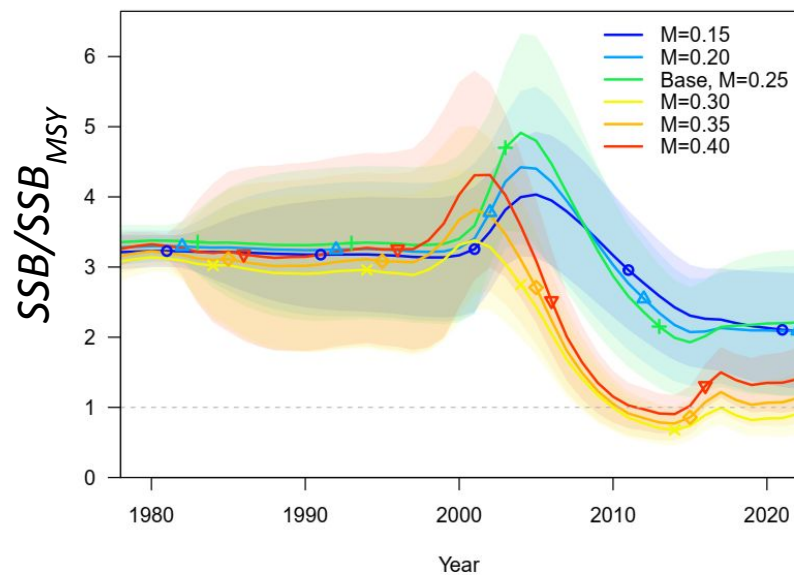


SigmaR

CPUE_1

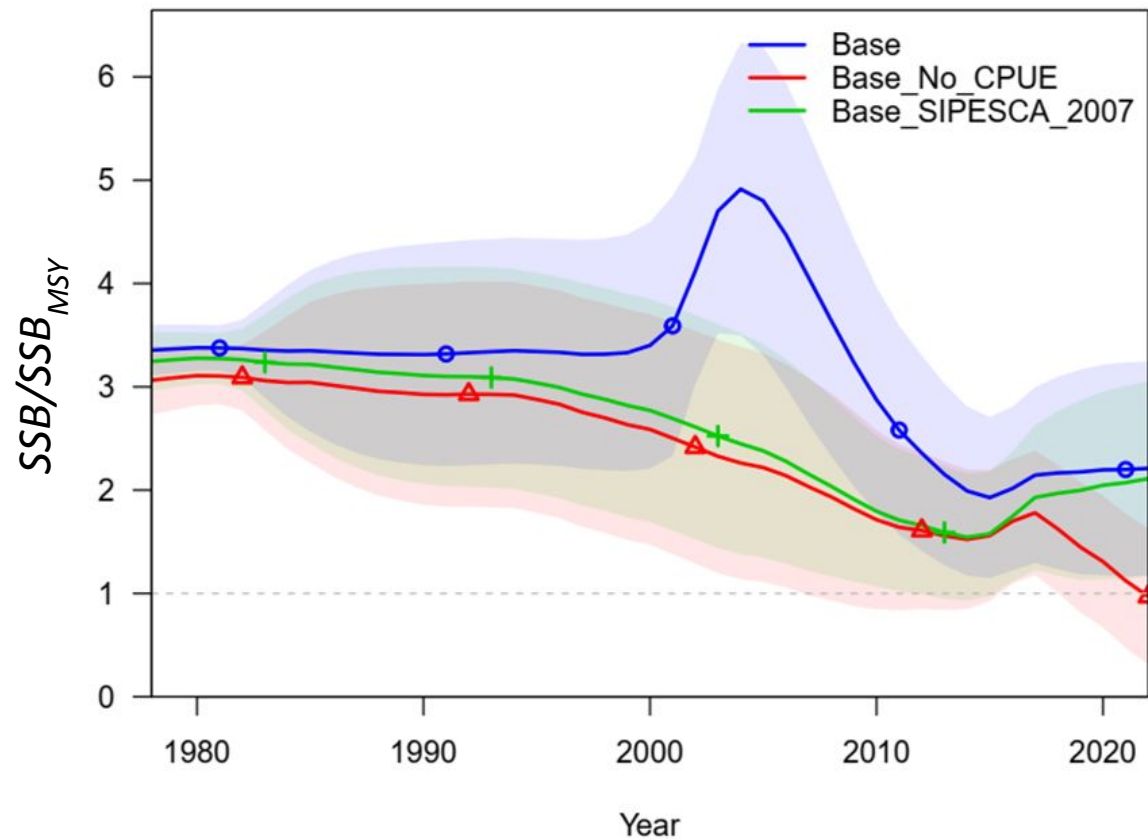


SSB/SSB_{MSY}

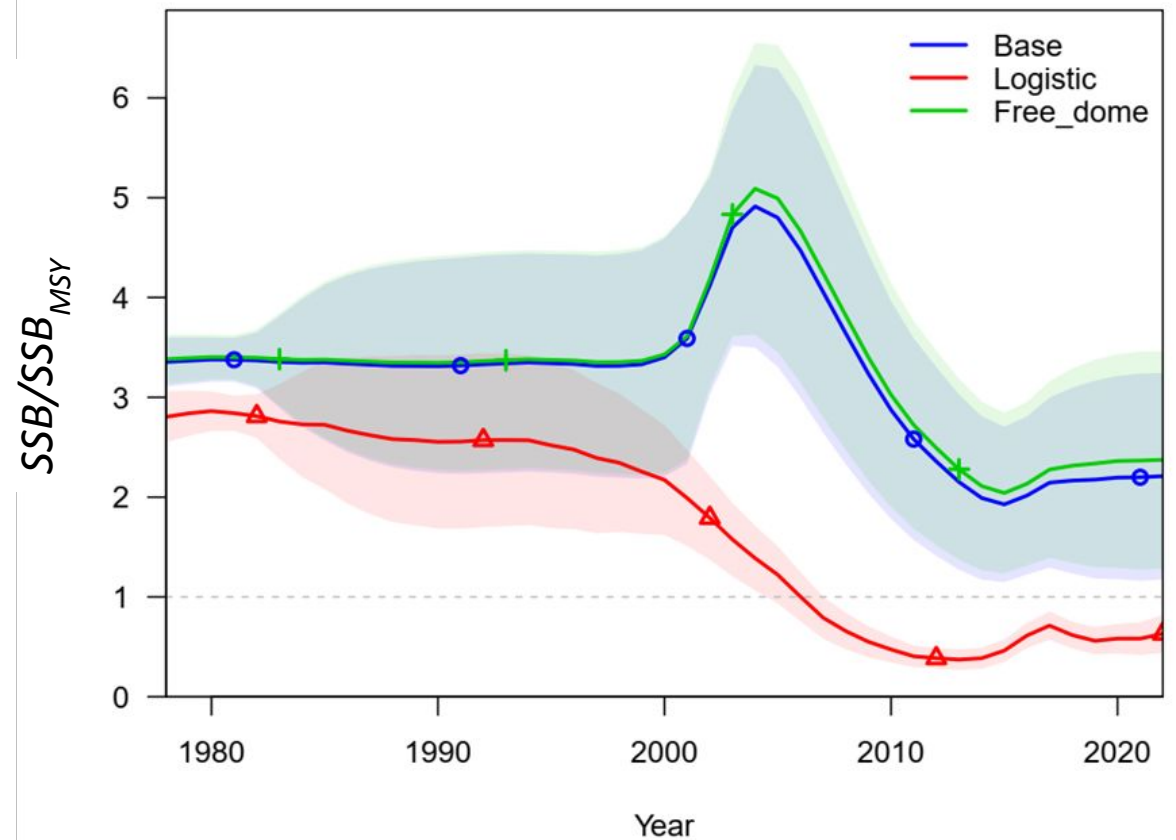


NATURAL MORTALITY

NEW SENSITIVITIES, RELATIVE SCALE



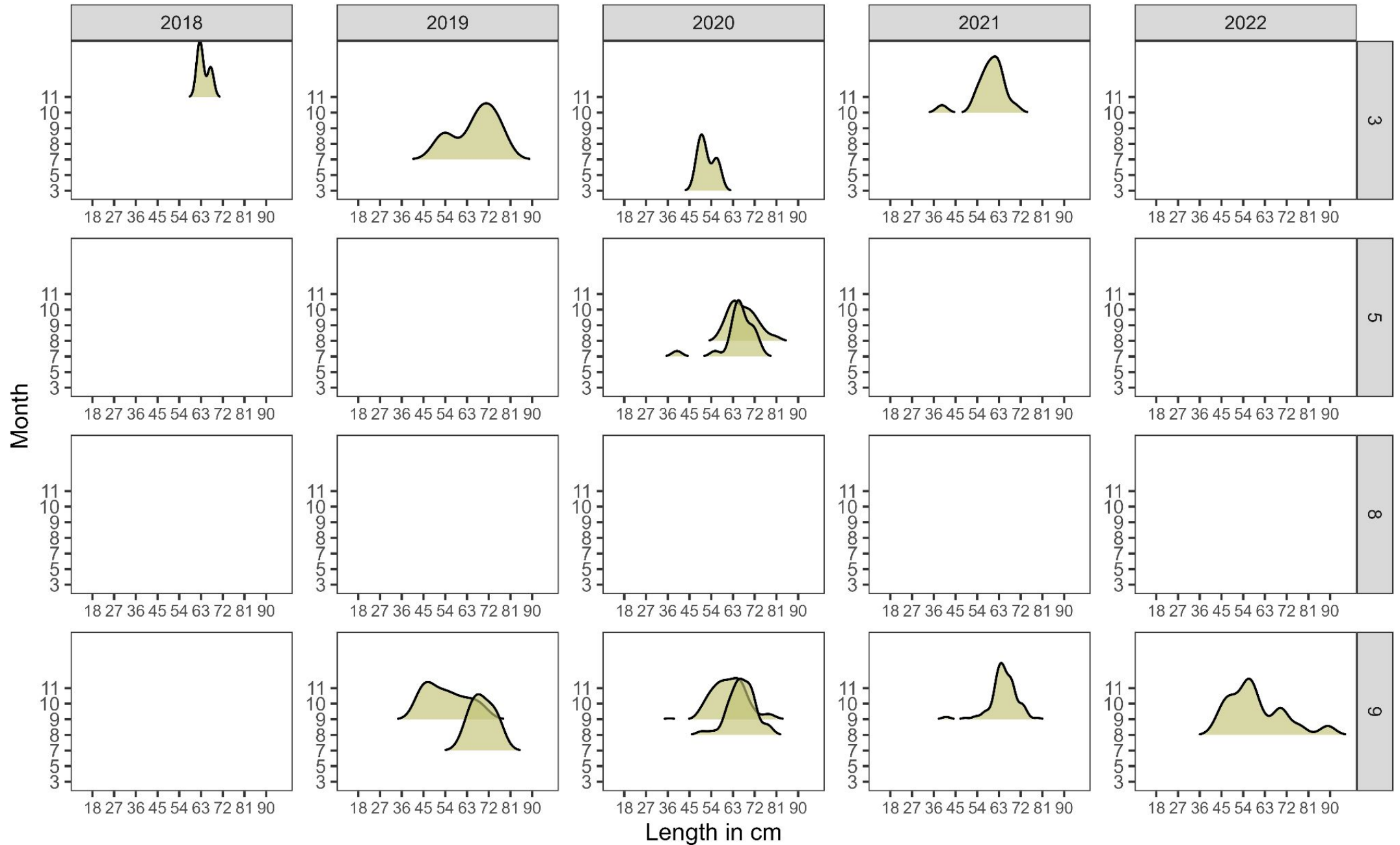
CPUE_2



SELECTIVITY

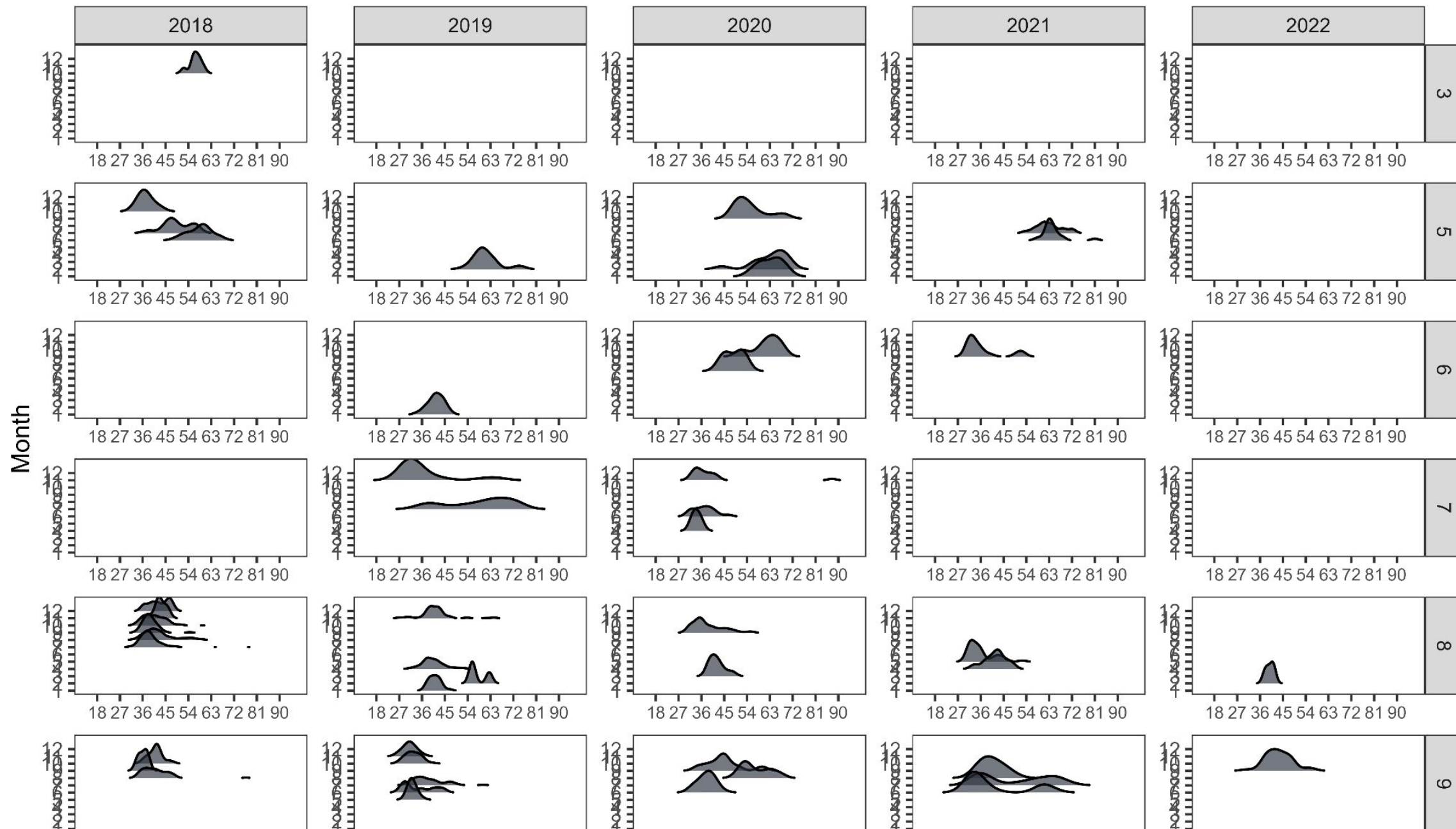
Hook: Japanese

Length distributions by month, year and hook size



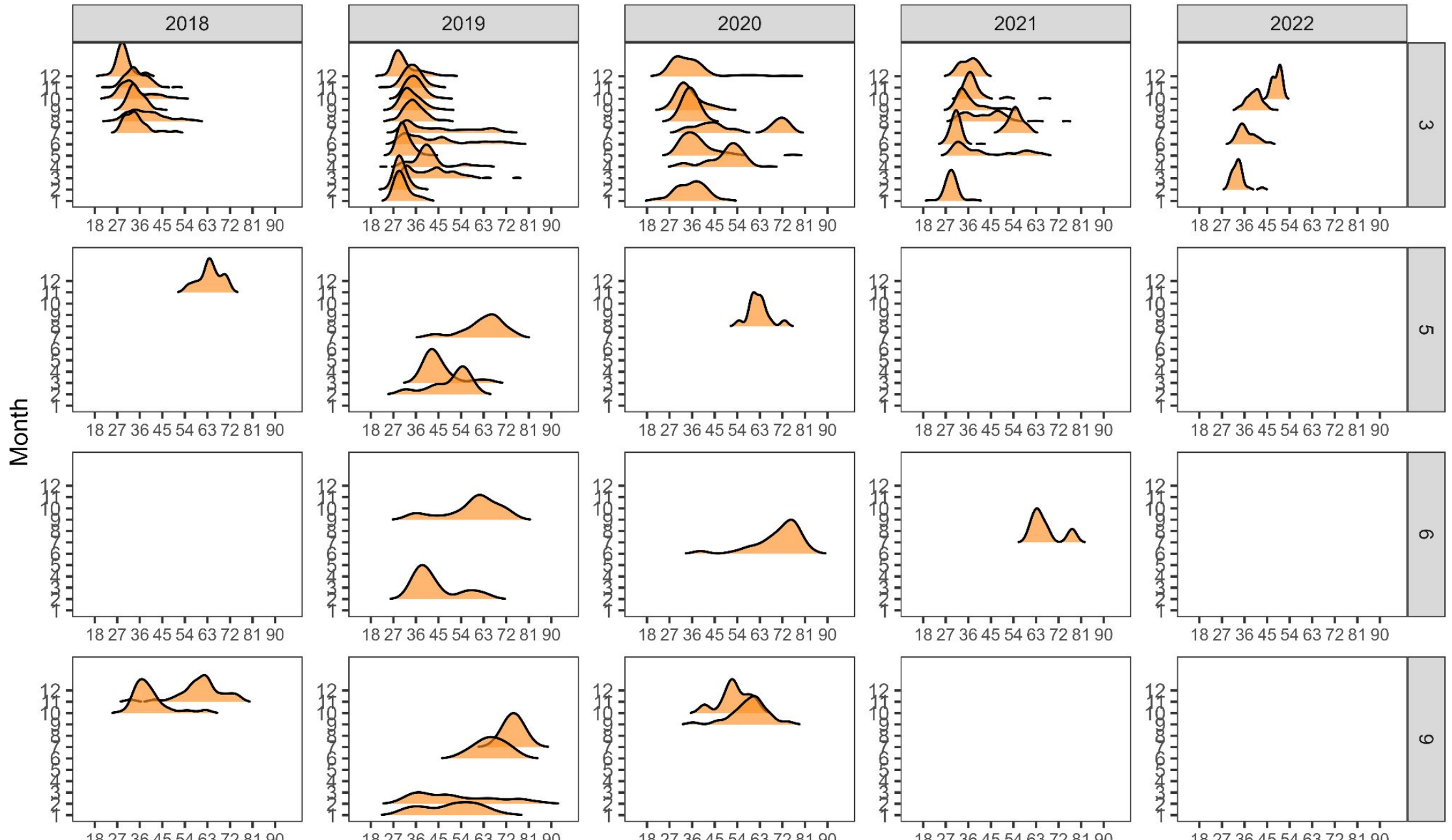
Hook: Norwegian

Length distributions by month, year and hook size



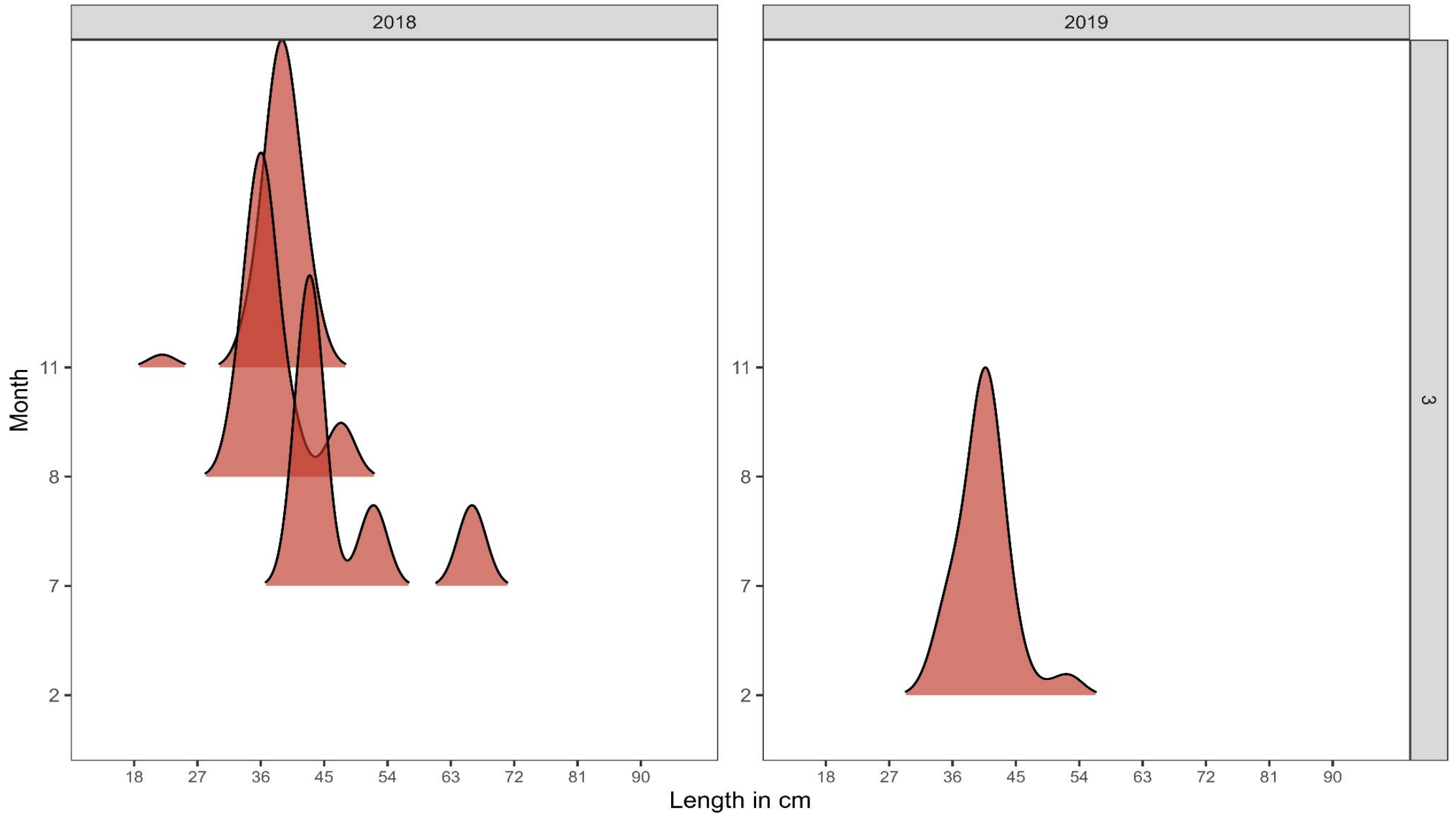
Hook: Norwegian

Length distributions by month, year and hook size

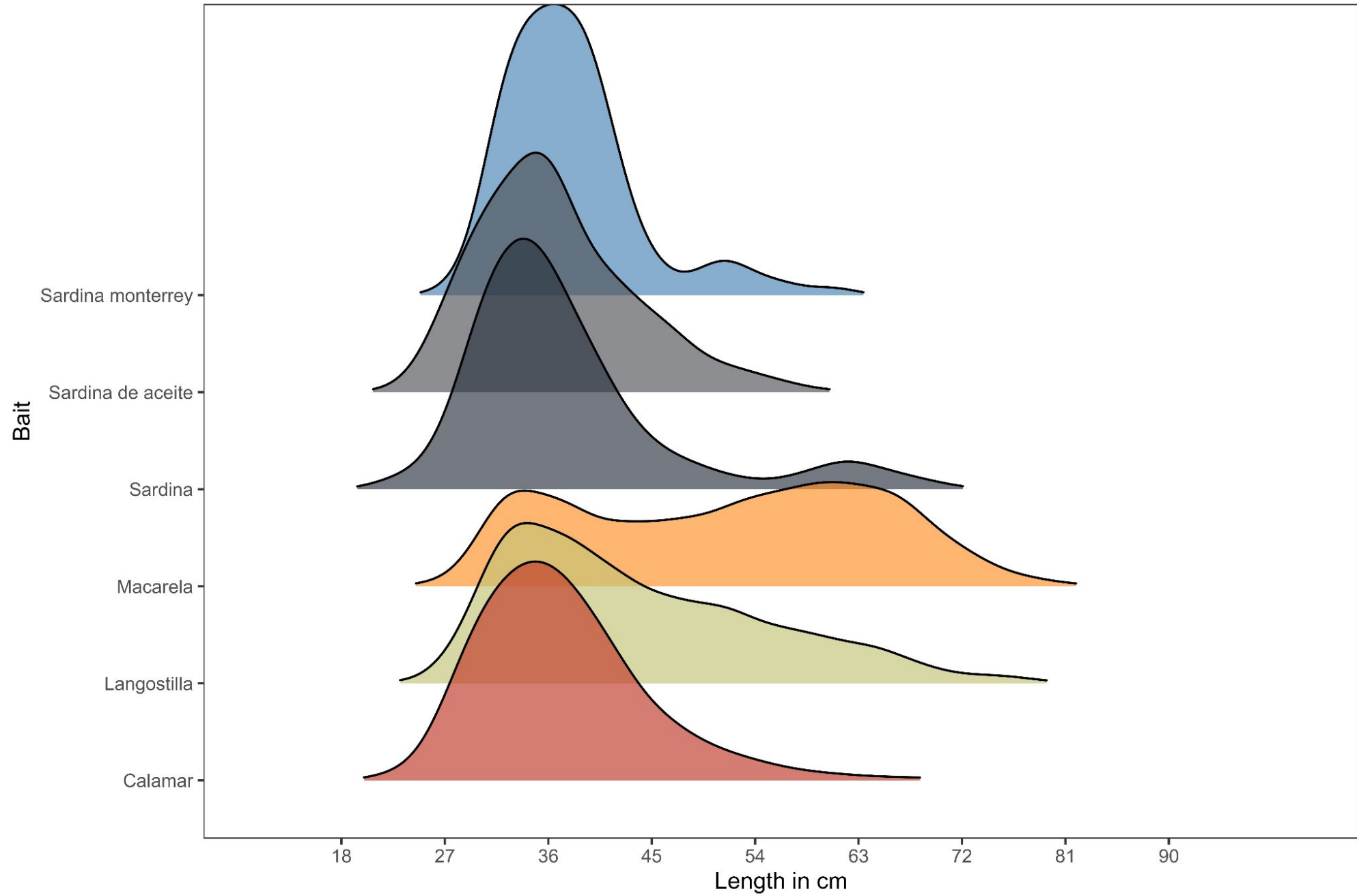


Hook: Circle

Length distributions by month, year and hook size



BAIT



Bait: Macarela

Length distributions by month, year and bait

